

SYCAMORE SINGLE TRACK TRAIL IMPROVEMENTS 2024

MADISON, WI

CONTRACT #9503

ACCOUNT #14933-51-130

NOVEMBER, 2023



OWNER

City of Madison - Parks Division

Contact: Corey Stelljes

CStelljes@cityofmadison.com

CONSULTANTS

IMBA Trail Solutions

Mike Repyak, Director

Tim Halbakken, PM,

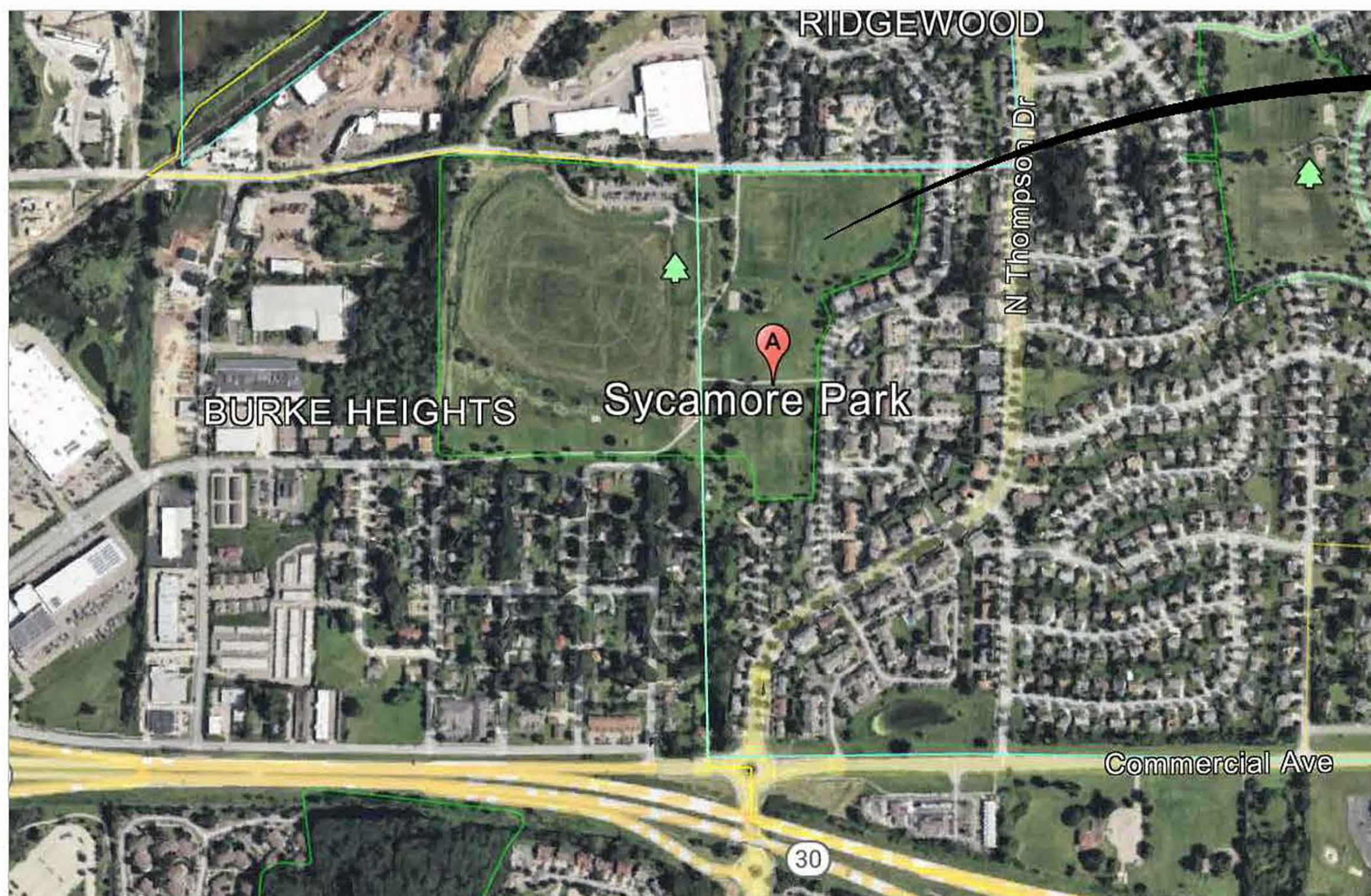
tim.halbakken@imba.com

INDEX OF SHEETS

SHEET NO.	SHEET TITLE
CP-00	COVER SHEET
CP-01	CONSTRUCTION NOTES
SP-01	OVERALL SITE PLAN
SP-02	PLAN ENLARGEMENT
SP-03	PLAN ENLARGEMENT
EC-01	EROSION CONTROL PLAN ENLARGEMENT
EC-02	EROSION CONTROL PLAN ENLARGEMENT
DT-01	DETAILS
DT-02	DETAILS
DT-03	DETAILS

SUBMITTALS

Bid Documents



PROJECT LOCATION:
830 JANA LN
MADISON, WI 53904

VICINITY MAP

NOT TO SCALE

SYCAMORE PARK
MADISON, WI
COVER PAGE

PROJECT:
SHEET TITLE:

PROJECT No: Cmpr2302
ORIGIN DATE: 10.31.23
DRAWN BY: TJH/RMH
CHECKED BY: MR

ISSUED FOR:

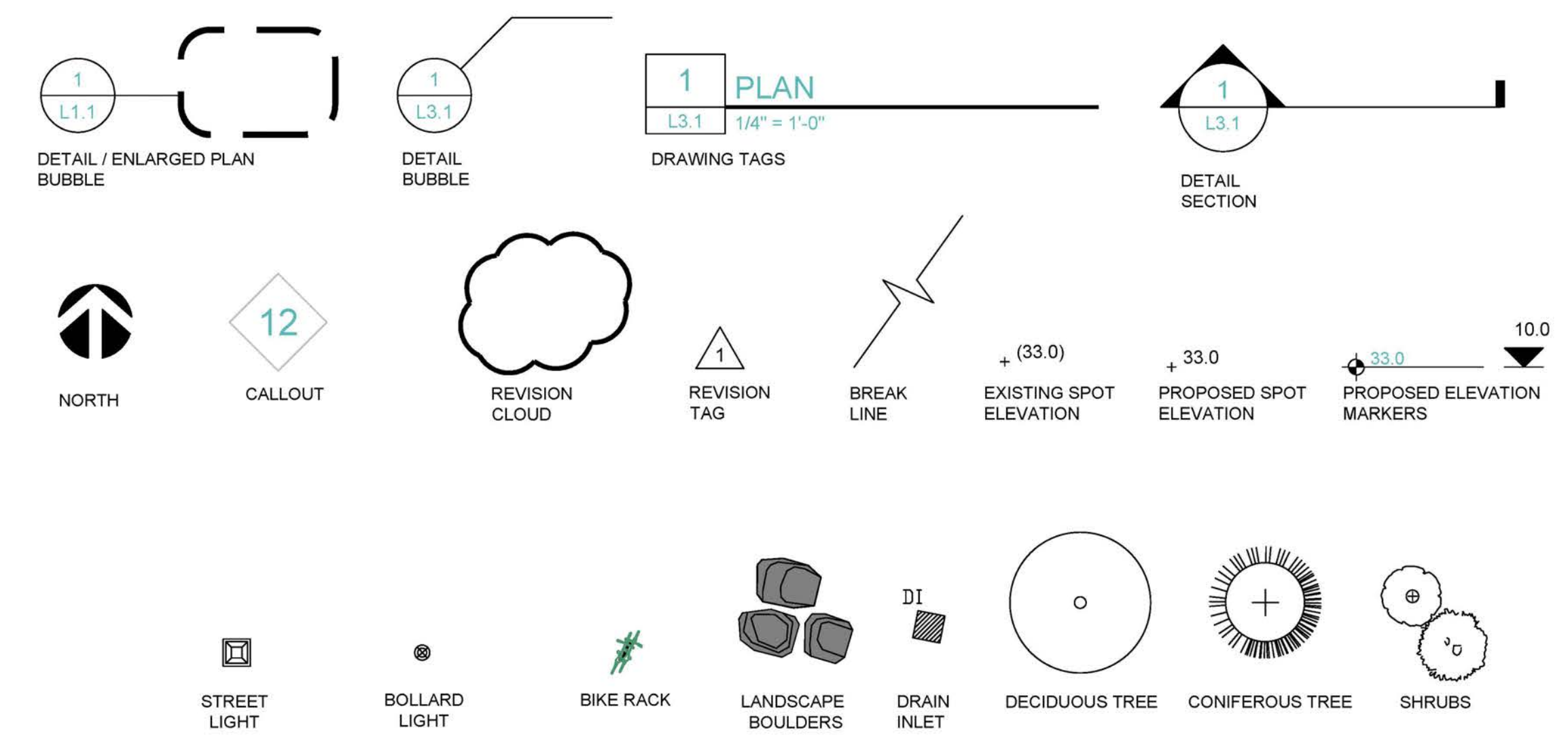
No.	DATE	COMMENT
A	10/31/23	90% DD -- CHECK SET
B	11/21/23	90% DD -- CHECK SET
C	11/29/23	90% DD -- CHECK SET

SHEET NUMBER:
CP-00

DRAWING SET ABBREVIATIONS

ABC	AGGREGATE BASE COURSE	EQ	EQUAL	MECH	MECHANICAL	SD	STORM DRAIN
AD	AREA DRAIN	EQUIP	EQUIPMENT	MED	MEDIUM	SECT	SECTION
ADJ	ADJACENT	ESC	ESCALATOR	MEZZ	MEZZANINE	SF	SQUARE FEET
AFF	ABOVE FINISH FLOOR	EXIST	EXISTING	MFR	MANUFACTURER	SHT	SHEET
ALT	ALTERNATE	EXP	EXPOSED	MH	MANHOLE	SIM	SIMILAR
ALUM	ALUMINIUM	EXPA	EXPANSION	MIN	MINIMUM	SIP	STRUCTURAL INSULATION PANEL
ANOD	ANODIZED	EXT	EXTERIOR	MISC	MISCELLANEOUS	SLR	SEALER
APPROX	APPROXIMATE	FD	FLOOR DRAIN	MLW	MILLWORK	SNK	SINK
ARCH	ARCHITECTURAL	FDN	FOUNDATION	MC	MASONRY OPENING	SPEC	SPECIFICATION
B&B	BALL AND BURLAP	FIN	FINISH(ed)	MTD	MOUNTED	SO	SQUARE
B/O	BOTTOM OF	FL	FLOOR	MTL	METAL	SS	STAINLESS STEEL
BC	BACK OF CURB	FLG	FLANGE	N	NORTH	SSK	SERVICE SINK
BLW	BELOW	FLSG	FLASHING	N/A	NOT APPLICABLE	STA	STAINED
BLDG	BUILDING	FLR	FLOOR	NIC	NOT IN CONTRACT	STD	STANDARD
BLKG	BLOCKING	FLUOR	FLUORESCENT	NO	NUMBER	STIFF	STIFFENER
BM	BEAM	FOC	FACE OF CONCRETE	NOM	NOMINAL	STL	STEEL
BOT	BOTTOM	FOF	FACE OF FINISH	NTS	NOT TO SCALE	STMP	STAMPED
BRG	BEARING	FOS	FACE OF STUD	OA	OVERALL	STN	STONE
BRK	BRICK	FR	FIRE-RETARDANT	OC	ON CENTER	STOR	STORAGE
BS	BOTTOM OF STEP	FT	FEET	OD	OUTSIDE DIAMETER	STRUCT	STRUCTURAL
BW	BOTTOM OF WALL	FTG	FOOTING	OFD	OVERFLOW DRAIN	SUSP	SUSPENDED
C/C	CENTER TO CENTER	GA	GAUGE	OPNG	OPENING	TR	TREAD
CAL	TREE CALIPER	GAL	GALLON	OPP	OPPOSITE	TSS	TOP OF STRUCTURAL SLAB
CFM	CUBIC FEET PER MINUTE	GALV	GALVANIZED	OSB	ORIENTED STRAND BOARD	TSF	TOP OF STRUCTURAL FLOOR
CIP	CAST IN PLACE	GC	GENERAL CONTRACTOR	OSF	OUTSIDE FACE	TFF	TOP OF FINISH FLOOR
CJ	CONTROL JOINT	GI	GALVANIZED IRON	OZ	OUNCE	TOC	TOP OF CURB
CL	CENTER LINE	GL	GLASS	PA	PAINTED	TEL	TELEPHONE
CLG	CEILING	GL BLK	GLASS BLOCK	PART	PARTITION	THK	THICKNESS
CLR	CLEAR	GL	GLASS	PAV	PAVERS	THRU	THROUGH
CM	CORRUGATED METAL	GMMU	GLASS MESH MASONRY UNIT	PC	POINTS OF CURVATURE	TOB	TOP OF BEAM
CMP	CORRUGATED METAL PIPE	GND	GROUND	PCC	PRECAST CONCRETE	TC	TOP OF CONCRETE
CMU	CONCRETE MASONRY UNIT	GR	GRANITE	PERP	PERPENDICULAR	TW	TOP OF WALL
CO	CLEAN OUT	GRD	GRADE	PL	PLATE	TRANS	TRANSVERSE
COL	COLUMN	HV	HEATING & VENTILATION	PLMB	PLUMBING	TS	TOP OF STEP
CONC	CONCRETE	HB	HOSE BIB	PLSTC	PLASTIC	TYP	TYPICAL
CONST	CONSTRUCTION	HC	HOLLOW CORE	PLWD	PLYWOOD	UG	UNDERGROUND
CONT	CONTINUOUS	HDW	HARDWARE	PNT	PAINTED	UL	UNDERWRITER'S LAB
CORR	CORRUGATED	HM	HOLLOW METAL	PPL	PROPERTY LINE	UNO	UNLESS NOTED OTHERWISE
CS	CONCRETE SEALER	HH	HAND HEWN	PR	PAIR	UR	URINAL
CU	CUBIC	HORZ	HORIZONTAL	PROJ	PROJECTION	VERT	VERTICAL
CY	CUBIC YARD	HP	HIGH POINT	PSF	POUNDS PER SQUARE FOOT	VEST	VESTIBULE
D	DEPTH	HR	HOURS	PSI	POUNDS PER SQUARE INCH	VIF	VERIFY IN FIELD
DD	DECK DRAIN	HT	HEIGHT	PT	PRESSURE TREATED	VNR	VENEER
DF	DRINKING FOUNTAIN	ID	INSIDE DIAMETER	PVC	POLYVINYL CHLORIDE	W	WEST
DI	DRAIN INLET	IN	INCHES	QTY	QUANTITY	WC	WATER CLOSET
DIA	DIAMETER	INCL	INCLUDE	R	RISER	WD	WOOD
DIAG	DIAGONAL	INFO	INFORMATION	RD	ROOF DRAIN	WLS	WALLS
DIM	DIMENSION	INSUL	INSULATION	REF	REFERENCE	WP	WATERPROOF
DN	DOWN	INT	INTERIORS	REFR	REFRIGERATOR	WPM	WATERPROOF MEMBRANE
DS	DOWNSPOUT	JT	JOINT	REINF	REINFORCED	WR	WATER RESISTANT
DTL	DETAIL	LAB	LABORATORY	REQD	REQUIRED	WS	WATER SURFACE
DWG	DRAWING	LAM	LAMINATED	REV	REVISION	WWF	WELDED WIRE FABRIC
E	EAST	LAV	LAVATORY	RM	ROOM	WWP	WHITE WATER PARK
EA	EACH	LB(S)	POUNDS	RO	ROUGH OPENING	YDS	YARDS
EC	EXPOSED CONSTRUCTION	LP	LOW POINT	RP	RADIUS POINT		
EJ	EXPANSION JOINT	LT	LIGHT	RS	ROUGH SAWN		
ELEC	ELECTRICAL	LTWT	LIGHTWEIGHT	S	SOUTH		
ELEV	ELEVATION	LVR	LOUVER	SC	SOLID CORE		
ELEVR	ELEVATOR	MACH	MACHINE	SCH	SCHEDULE		
EM	EMERGENCY	MATL	MATERIAL				
EMBED	EMBEDMENT	MAX	MAXIMUM				

GRAPHIC SYMBOLS LEGEND



SUMMARY OF WORK

These Bid Documents provide the layout and details necessary for the City of Madison to proceed with the RFP process for all bike and trails related amenities for the project area.

P. O. Box 20280
Boulder, CO 80308
303.545.9011
www.IMBA.com

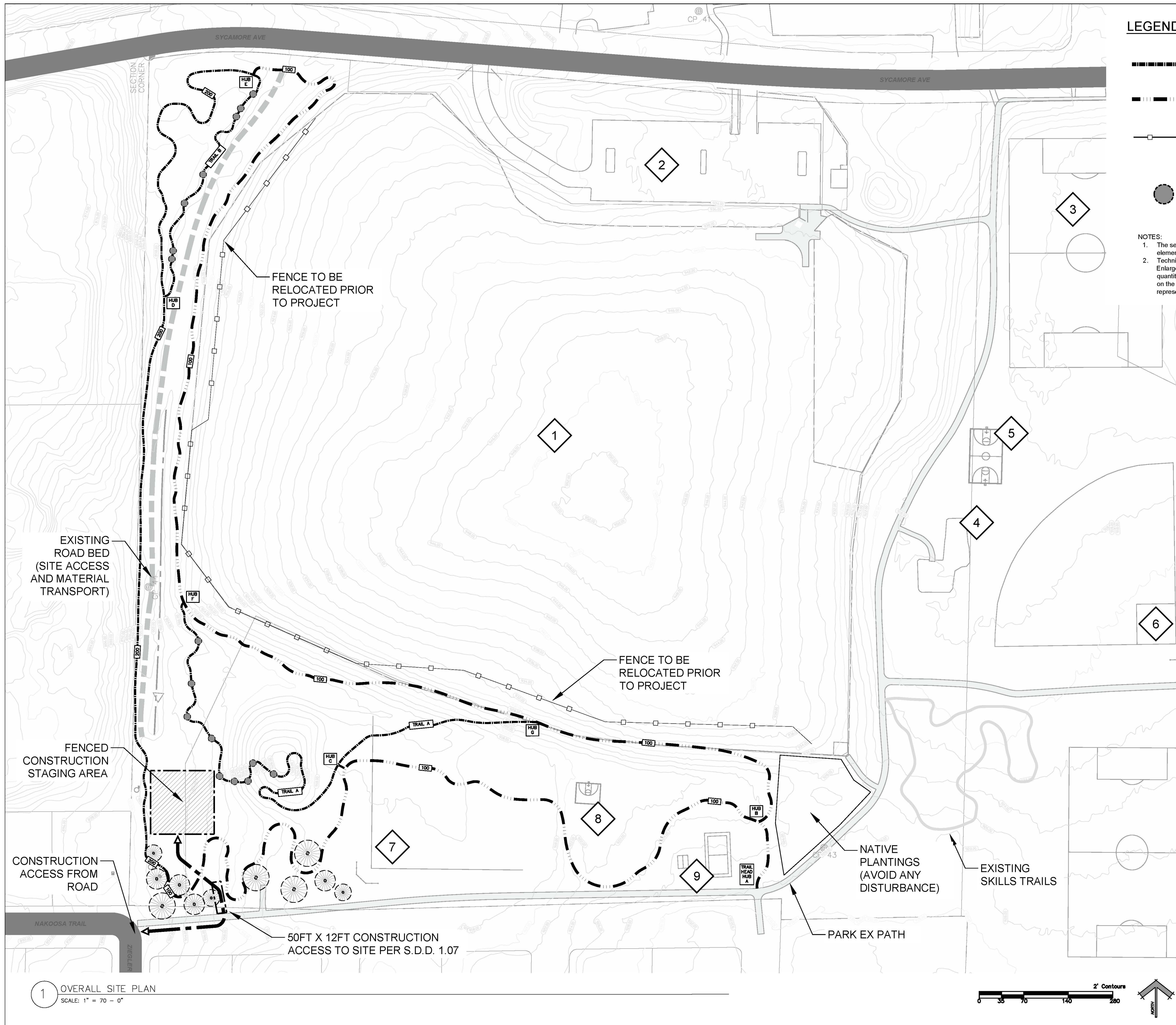
SYCAMORE PARK
MADISON, WI
CONSTRUCTION NOTES

PROJECT: _____ SHEET TITLE: _____

PROJECT No: **CMPR2302**
ORIGIN DATE: **10.31.23**
DRAWN BY: **TJH/RMH**
CHECKED BY: **MR**

ISSUED FOR:		
No.	DATE	COMMENT
A	10/31/23	BOX DD - CHECK SET
B	11/21/23	BOX DD - CHECK SET
C	11/29/23	BOX DD - CHECK SET

SHEET NUMBER:
CP-01



LEGEND

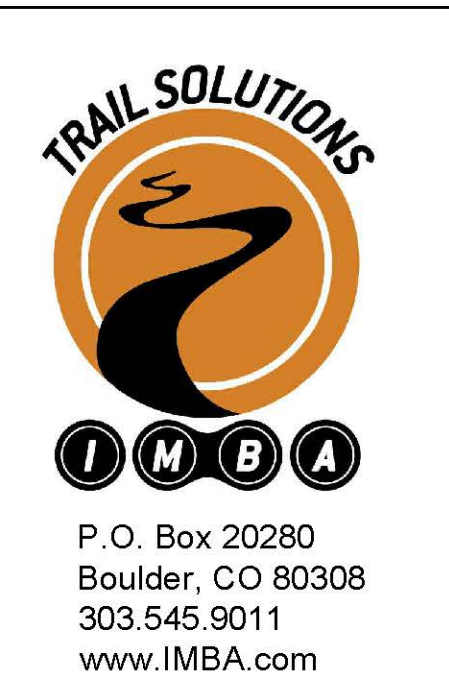
- Mountain bike optimized (MBO) natural surface trail
- Mountain bike optimized flow trail with chip seal tread
- Fence relocation to be performed by other prior to project. Approximate layout for relocation of existing fence is shown. Contractor to discuss with property owner about new location/details before trail construction.
- Technical Trail Feature (TTF)

NOTES:

- The selected contractor will be responsible for the layout and selection of feature elements on the MBO and Flow Trails, refer to sheet DT-02 for trail feature details.
- Technical Trail Features (TTF) are called out and located specifically on the Plan Enlargement sheet SP-02 and SP-03. The selected contractor shall adhere to the quantities proposed, but may suggest substitutions and/or alternate layouts based on the field fitting process. All alterations shall be approved by the owner's representative. Refer to sheet DT-03 for TTF details.

SITE ELEMENTS

- OFF-LEASH DOG PARK
- PARKING
- SOCCER FIELD
- PLAYGROUND
- BASKETBALL COURT
- BASEBALL FIELD
- SOFTBALL FIELD
- HALF COURT
- VOLLEY BALL AND SHELTER



**SYCAMORE PARK
MADISON, WI
OVERALL SITE PLAN**

PROJECT: _____ SHEET TITLE: _____

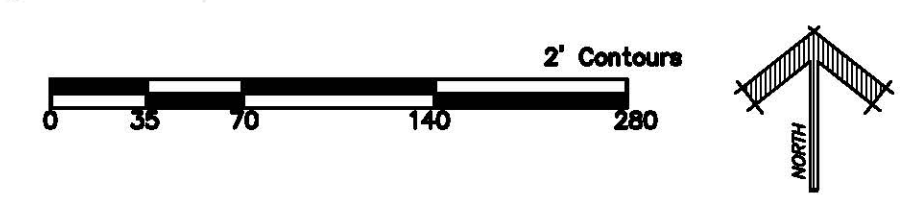
PROJECT No. CMPR2302
 ORIGIN DATE: 10.31.23
 DRAWN BY: TJH/RMH
 CHECKED BY: MR

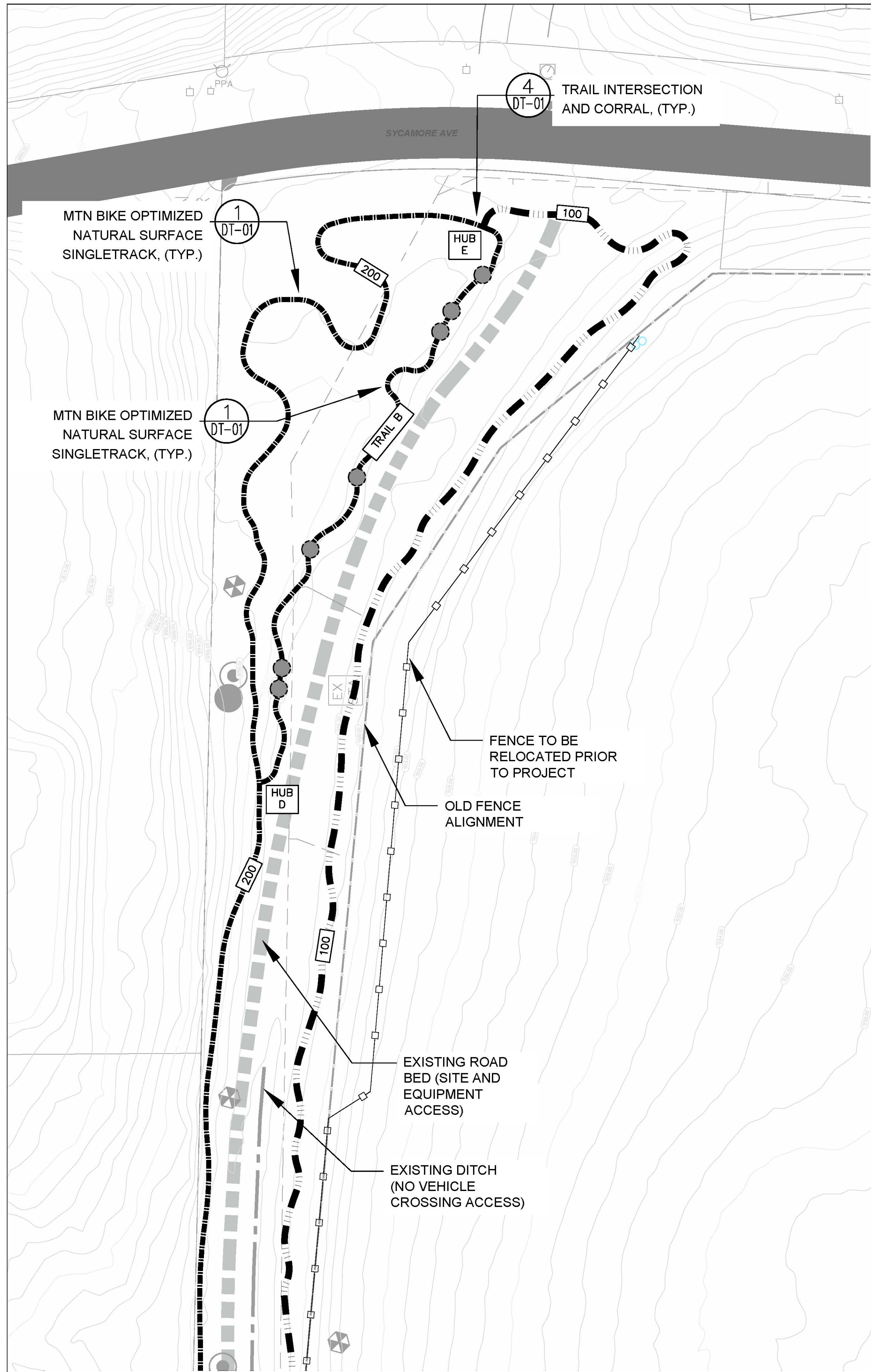
ISSUED FOR:

No.	DATE	COMMENT
A	10/31/23	90% DD - CHECK SET
B	11/21/23	90% DD - CHECK SET
C	11/29/23	90% DD - CHECK SET

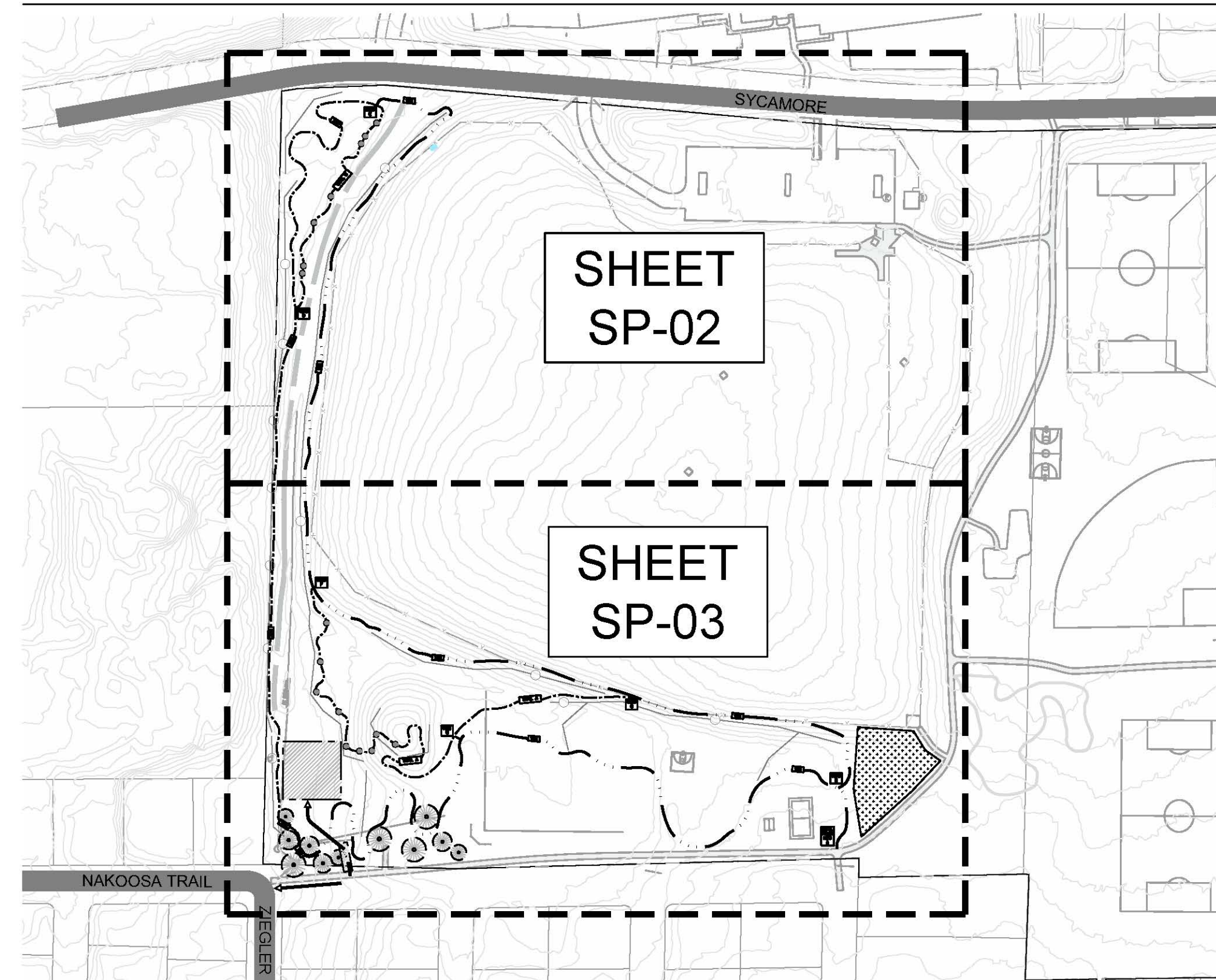
SHEET NUMBER:
SP-01

1 OVERALL SITE PLAN
SCALE: 1" = 70' - 0"





SHEET INDEX PLAN



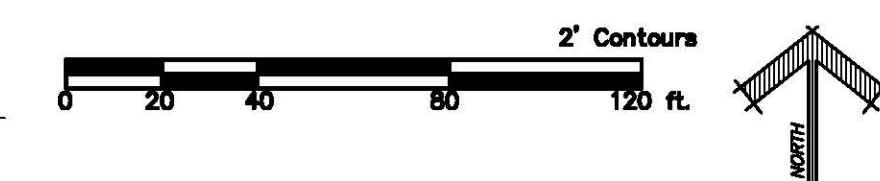
LEGEND

- Mountain bike optimized (MBO) natural surface trail
- Mountain bike optimized flow trail with chip seal tread
- Fence relocation to be performed by other prior to project. Approximate layout for relocation of existing fence is shown. Contractor to discuss with property owner about new location/details before trail construction.
- Technical Trail Feature (TTF)
- DETAIL NUMBER
- SHEET NUMBER

NOTES:

1. The selected contractor will be responsible for the layout and selection of feature elements on the MBO and Flow Trails, refer to sheet DT-02 for trail feature details.
2. Technical Trail Features (TTF) are called out and located specifically on the Plan Enlargement sheet SP-02 and SP-03. The selected contractor shall adhere to the quantities proposed, but may suggest substitutions and/or alternate layouts based on the field fitting process. All alterations shall be approved by the owner's representative. Refer to sheet DT-03 for TTF details.

1 PLAN ENLARGEMENT
SCALE: 1" = 40' - 0"



SYCAMORE PARK
MADISON, WI
PLAN ENLARGEMENT

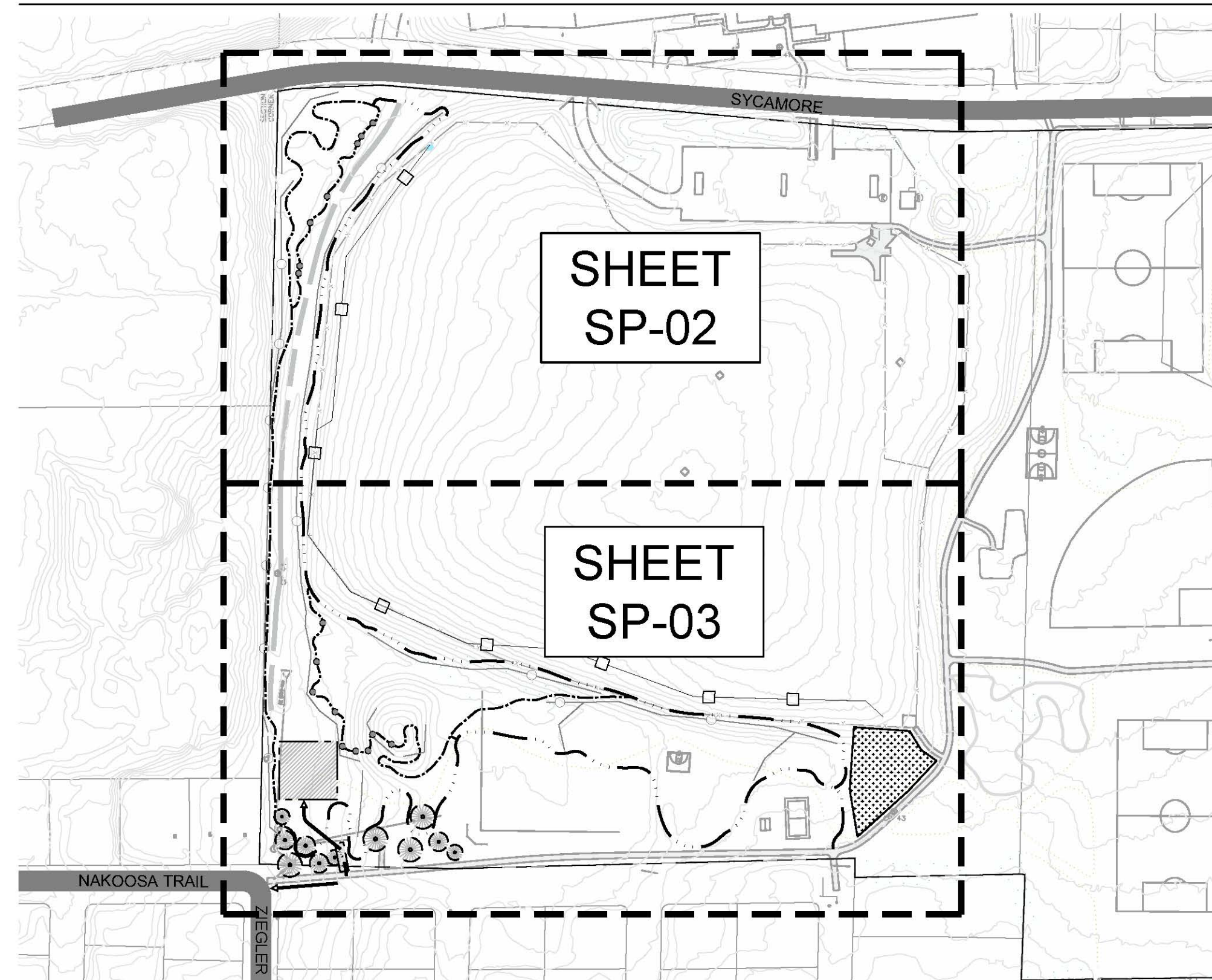
PROJECT:
SHEET TITLE:

PROJECT No. CMPR2302
ORIGIN DATE: 10.31.23
DRAWN BY: TJH/RMH
CHECKED BY: MR

ISSUED FOR:		
No.	DATE	COMMENT
A	10/31/23	90% DD - CHECK SET
B	11/21/23	90% DD - CHECK SET
C	11/29/23	90% DD - CHECK SET

SHEET NUMBER:
SP-02

SHEET INDEX PLAN



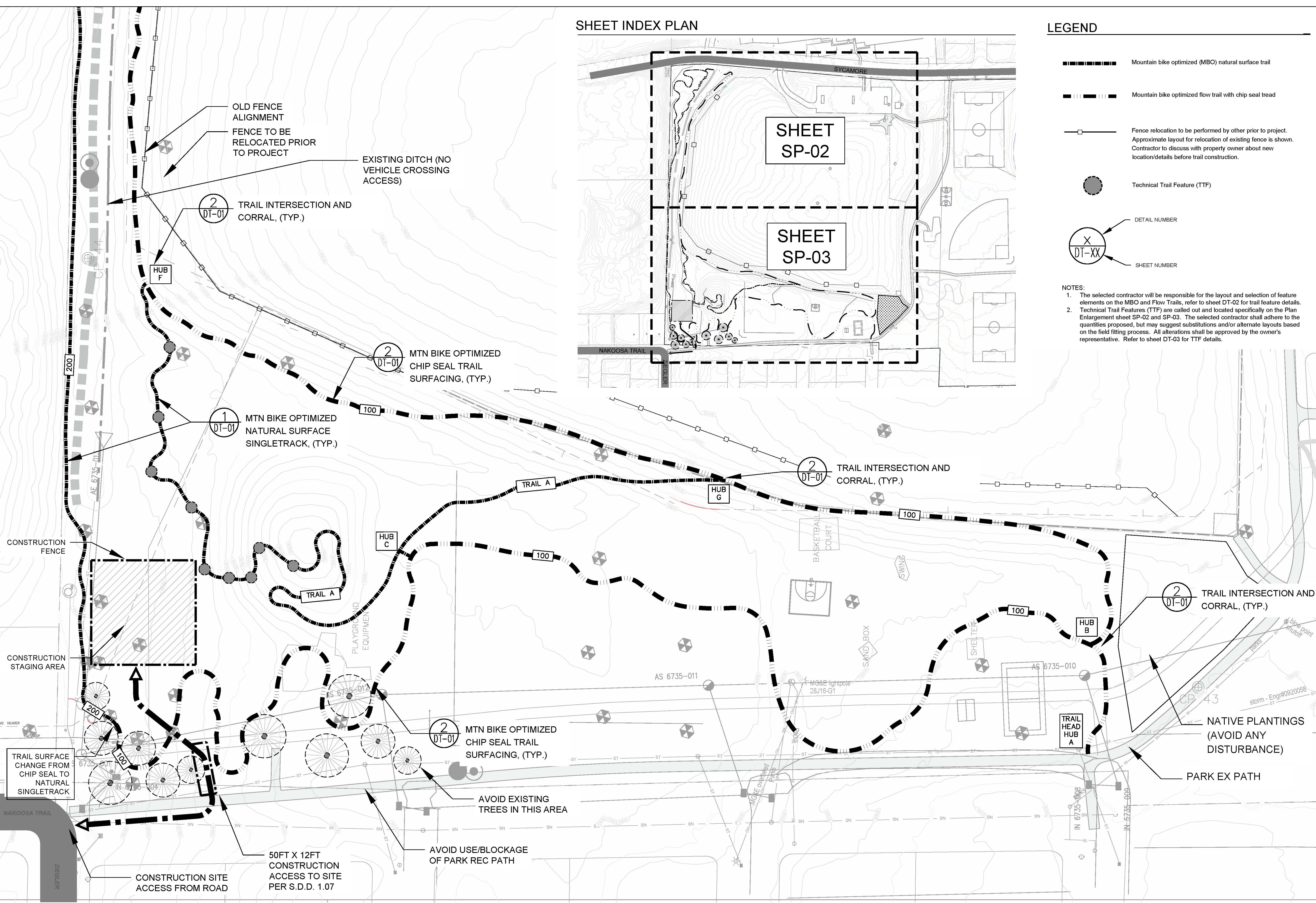
LEGEND

- Mountain bike optimized (MBO) natural surface trail
- Mountain bike optimized flow trail with chip seal tread
- Fence relocation to be performed by other prior to project. Approximate layout for relocation of existing fence is shown. Contractor to discuss with property owner about new location/details before trail construction.
- Technical Trail Feature (TTF)
- DETAIL NUMBER
- SHEET NUMBER

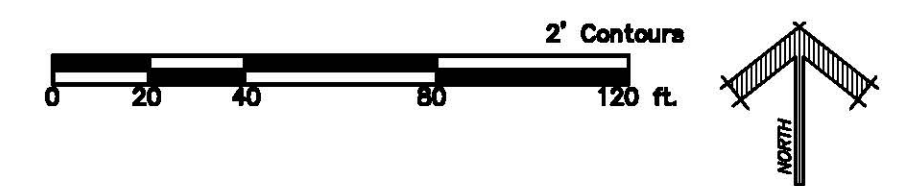
- NOTES:
- The selected contractor will be responsible for the layout and selection of feature elements on the MBO and Flow Trails, refer to sheet DT-02 for trail feature details.
 - Technical Trail Features (TTF) are called out and located specifically on the Plan Enlargement sheet SP-02 and SP-03. The selected contractor shall adhere to the quantities proposed, but may suggest substitutions and/or alternate layouts based on the field fitting process. All alterations shall be approved by the owner's representative. Refer to sheet DT-03 for TTF details.



SYCAMORE PARK
MADISON, WI
PLAN ENLARGEMENT



2 PLAN ENLARGEMENT
SCALE: 1" = 40' - 0"

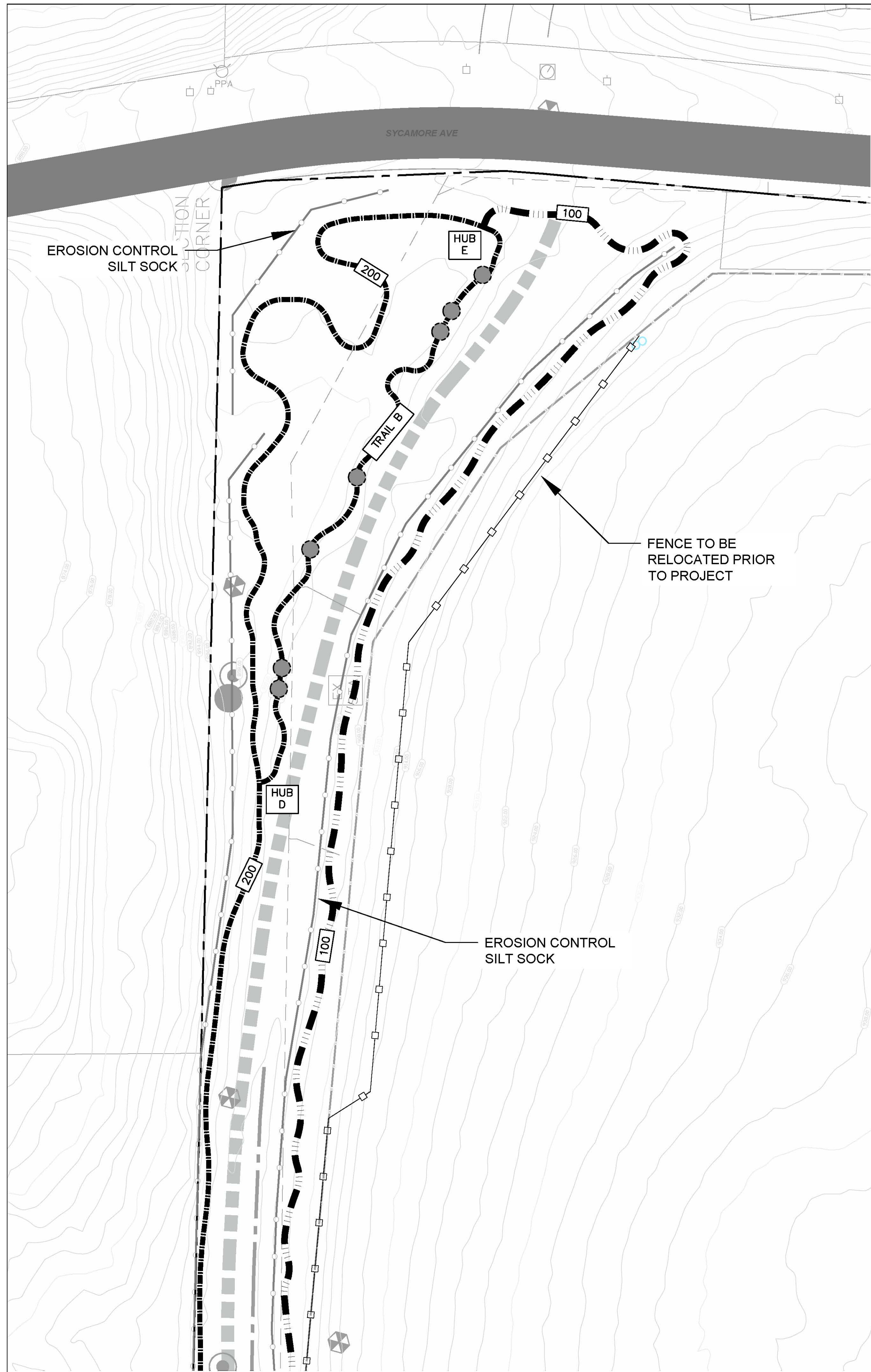


PROJECT:
SHEET TITLE:

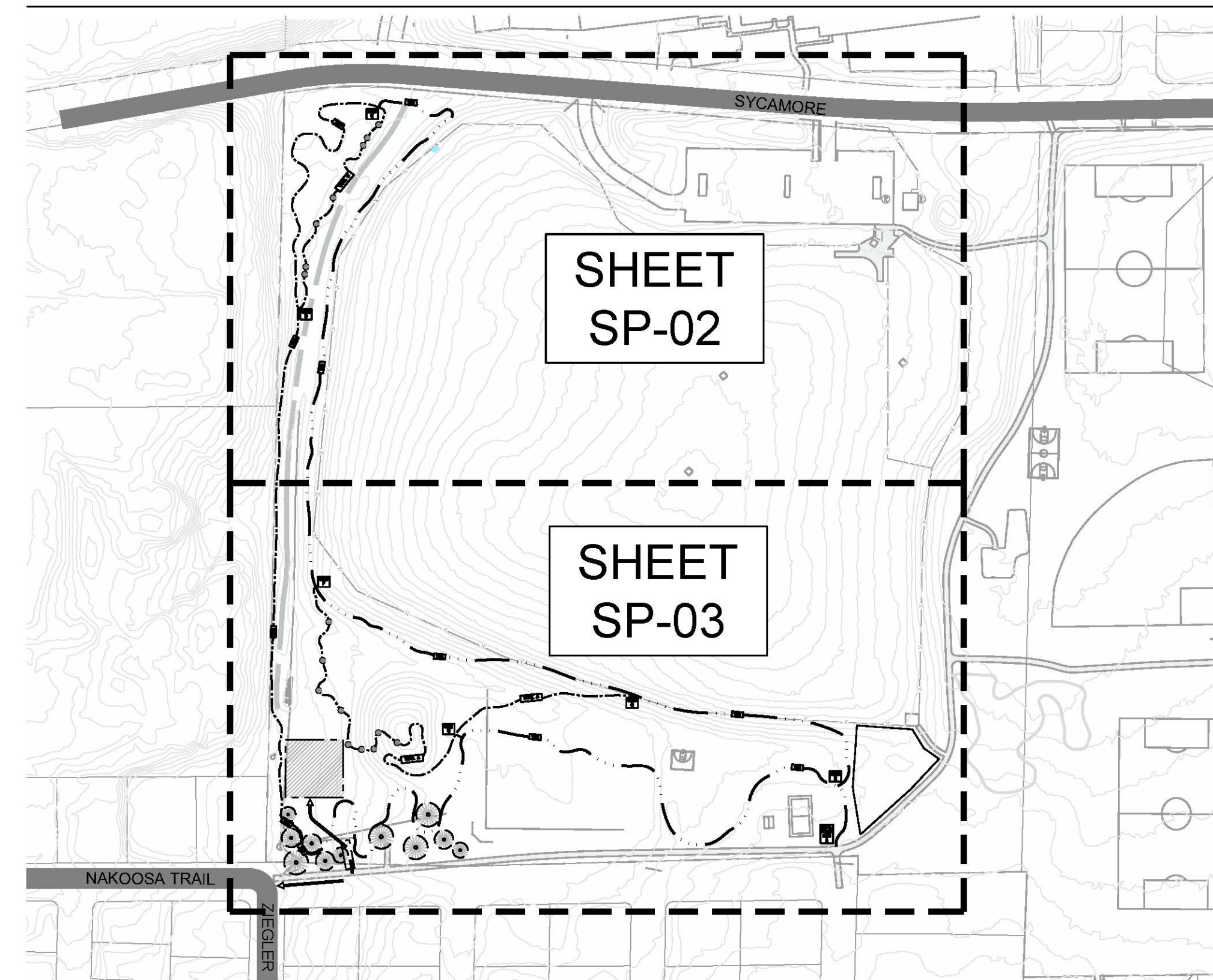
PROJECT No. CMPR2302
ORIGIN DATE: 10.31.23
DRAWN BY: TJH/RMH
CHECKED BY: MR

ISSUED FOR:		
No.	DATE	COMMENT
A	10/31/23	90% DD - CHECK SET
B	11/21/23	90% DD - CHECK SET
C	11/29/23	90% DD - CHECK SET

SHEET NUMBER:
SP-03



SHEET INDEX PLAN



LEGEND

- Mountain bike optimized (MBO) natural surface trail
- Mountain bike optimized flow trail with chip seal tread
- Fence relocation to be performed by other prior to project. Approximate layout for relocation of existing fence is shown. Contractor to discuss with property owner about new location/details before trail construction.
- Technical Trail Feature (TTF)
- Erosion control silt sock approximate location

NOTES:

1. The selected contractor will be responsible for the layout and selection of feature elements on the MBO and Flow Trails, refer to sheet DT-02 for trail feature details.
2. Technical Trail Features (TTF) are called out and located specifically on the Plan Enlargement sheet SP-02 and SP-03. The selected contractor shall adhere to the quantities proposed, but may suggest substitutions and/or alternate layouts based on the field fitting process. All alterations shall be approved by the owner's representative. Refer to sheet DT-03 for TTF details.



Trail Solutions
 I M B A
 P. O. Box 20280
 Boulder, CO 80308
 303.545.9011
 www.IMBA.com

SYCAMORE PARK
 MADISON, WI

EROSION CONTROL PLAN ENLARGEMENT

PROJECT:

PROJECT No. CMPR2302
 ORIGIN DATE: 10.31.23
 DRAWN BY: TJH/RMH
 CHECKED BY: MR

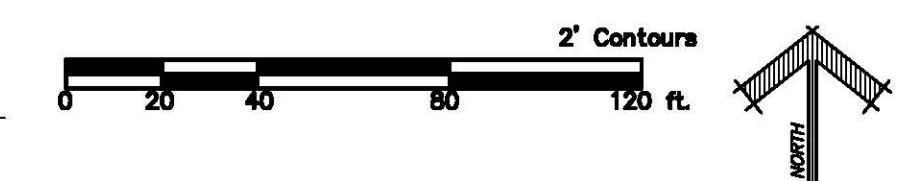
ISSUED FOR:

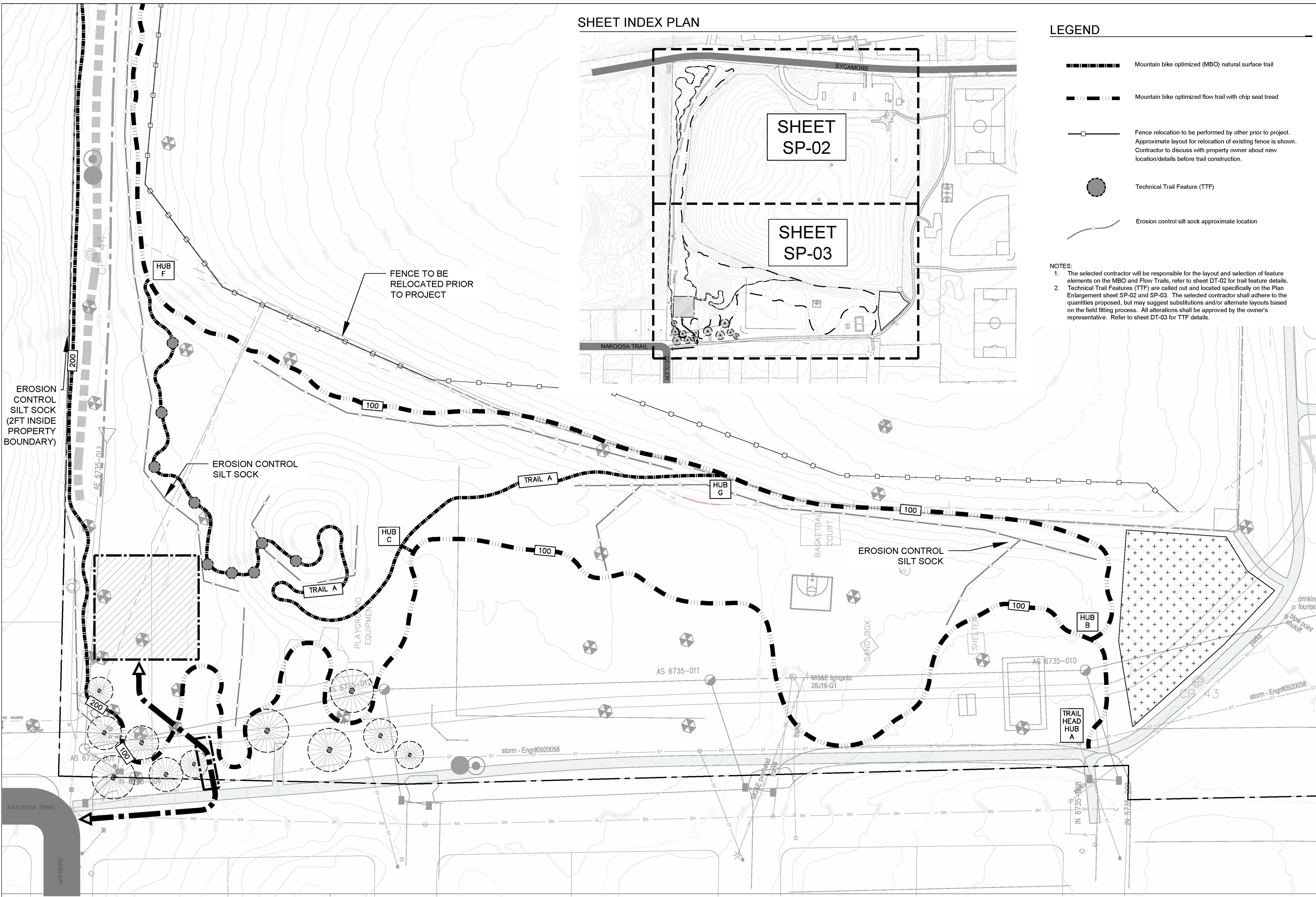
No.	DATE	COMMENT
A	10/31/23	90% DD - CHECK SET
B	11/21/23	90% DD - CHECK SET
C	11/29/23	90% DD - CHECK SET

SHEET NUMBER:

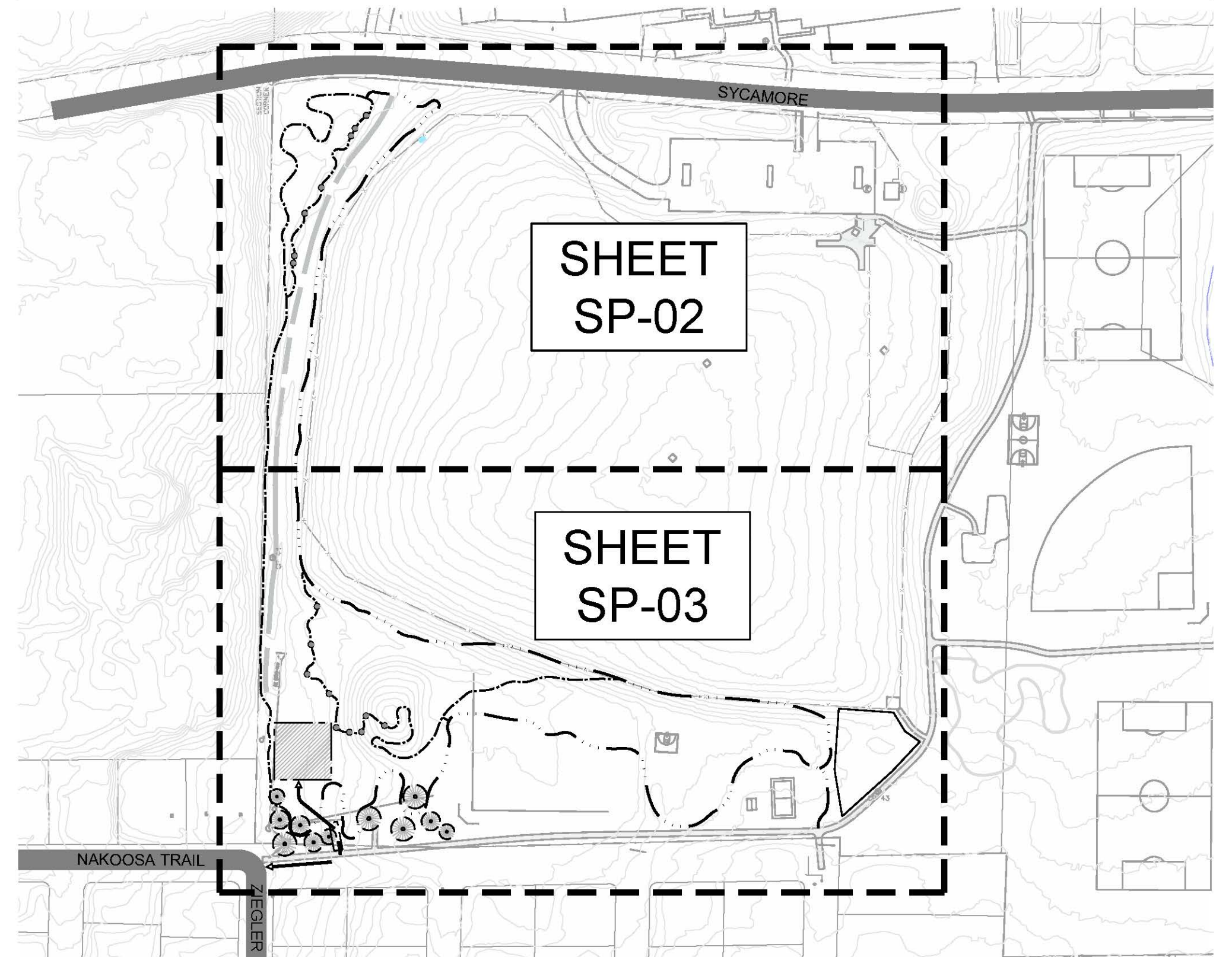
EC-01

1 EROSION CONTROL PLAN ENLARGEMENT
 SCALE: 1" = 40' - 0"





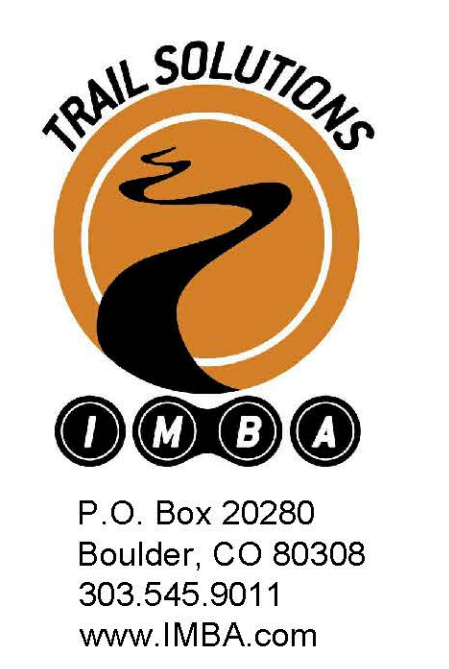
SHEET INDEX PLAN



LEGEND

- Mountain bike optimized (MBO) natural surface trail
- Mountain bike optimized flow trail with chip seal tread
- Fence relocation to be performed by other prior to project. Approximate layout for relocation of existing fence is shown. Contractor to discuss with property owner about new location/details before trail construction.
- Technical Trail Feature (TTF)
- Erosion control silt sock approximate location

NOTES:
 1. The selected contractor will be responsible for the layout and selection of feature elements on the MBO and Flow Trails, refer to sheet DT-02 for trail feature details.
 2. Technical Trail Features (TTF) are called out and located specifically on the Plan Enlargement sheet SP-02 and SP-03. The selected contractor shall adhere to the quantities proposed, but may suggest substitutions and/or alternate layouts based on the field fitting process. All alterations shall be approved by the owner's representative. Refer to sheet DT-03 for TTF details.

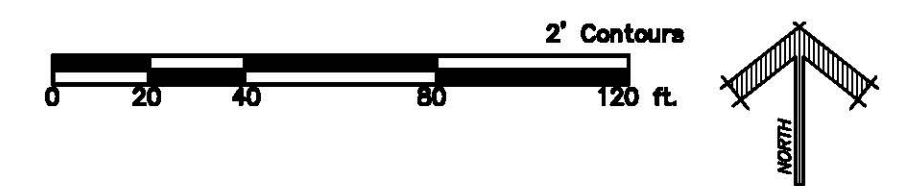


SYCAMORE PARK
 MADISON, WI
 EROSION CONTROL PLAN ENLARGEMENT

PROJECT: SHEET TITLE:

PROJECT No. CMPR2302
 ORIGIN DATE: 10.31.23
 DRAWN BY: TJH/RMH
 CHECKED BY: MR

ISSUED FOR:		
No.	DATE	COMMENT
A	10/31/23	90% DD - CHECK SET
B	11/21/23	90% DD - CHECK SET
C	11/29/23	90% DD - CHECK SET





P.O. Box 20280
 Boulder, CO 80308
 303.545.9011
 www.IMBA.com

**SYCAMORE PARK
 MADISON, WI**
 DETAILS

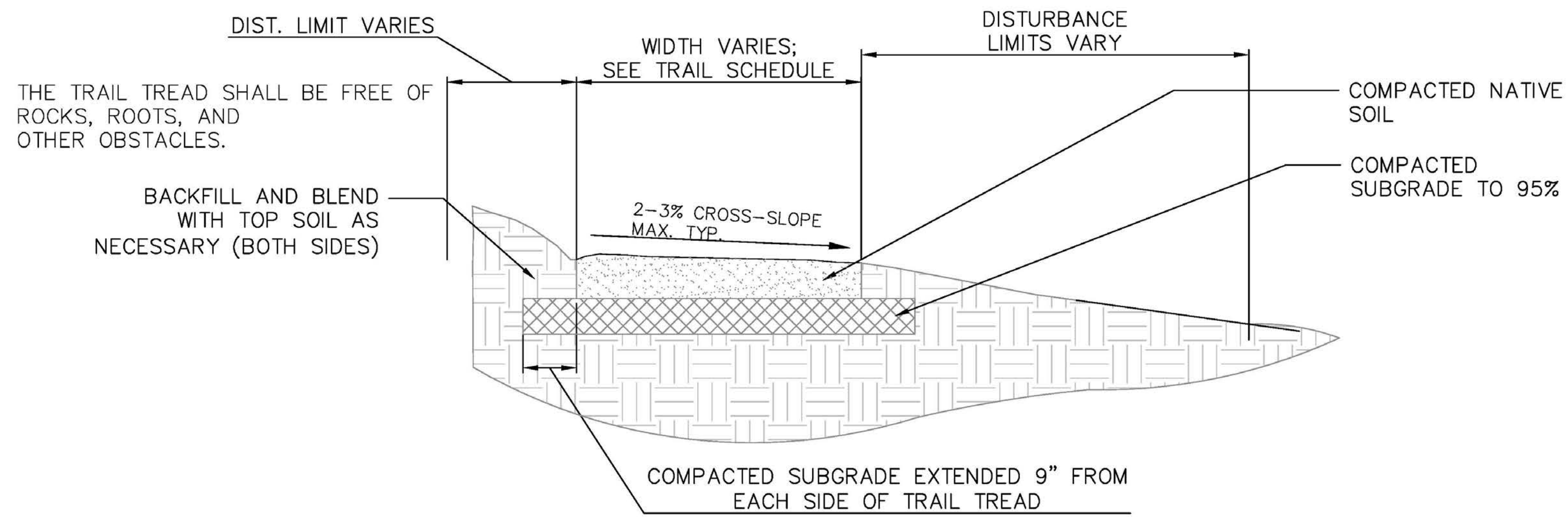
PROJECT:

SHEET TITLE:

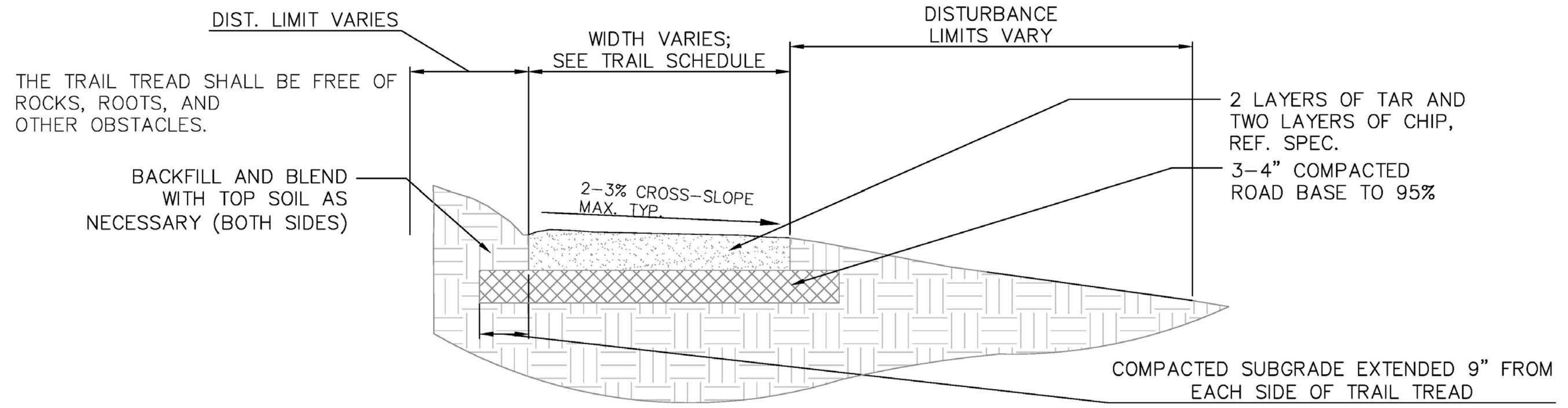
PROJECT No. CMPR2302
 ORIGIN DATE: 10.31.23
 DRAWN BY: TJH/RMH
 CHECKED BY: MR

ISSUED FOR:		
No.	DATE	COMMENT
A	10/31/23	90% DD - CHECK SET
B	11/21/23	90% DD - CHECK SET
C	11/29/23	90% DD - CHECK SET

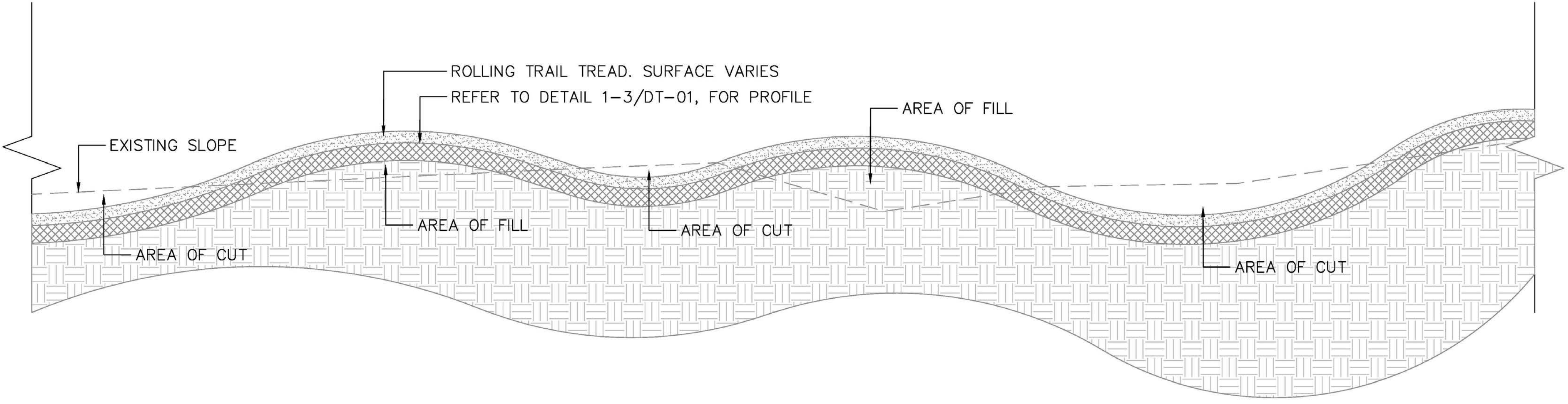
SHEET NUMBER:
DT-01



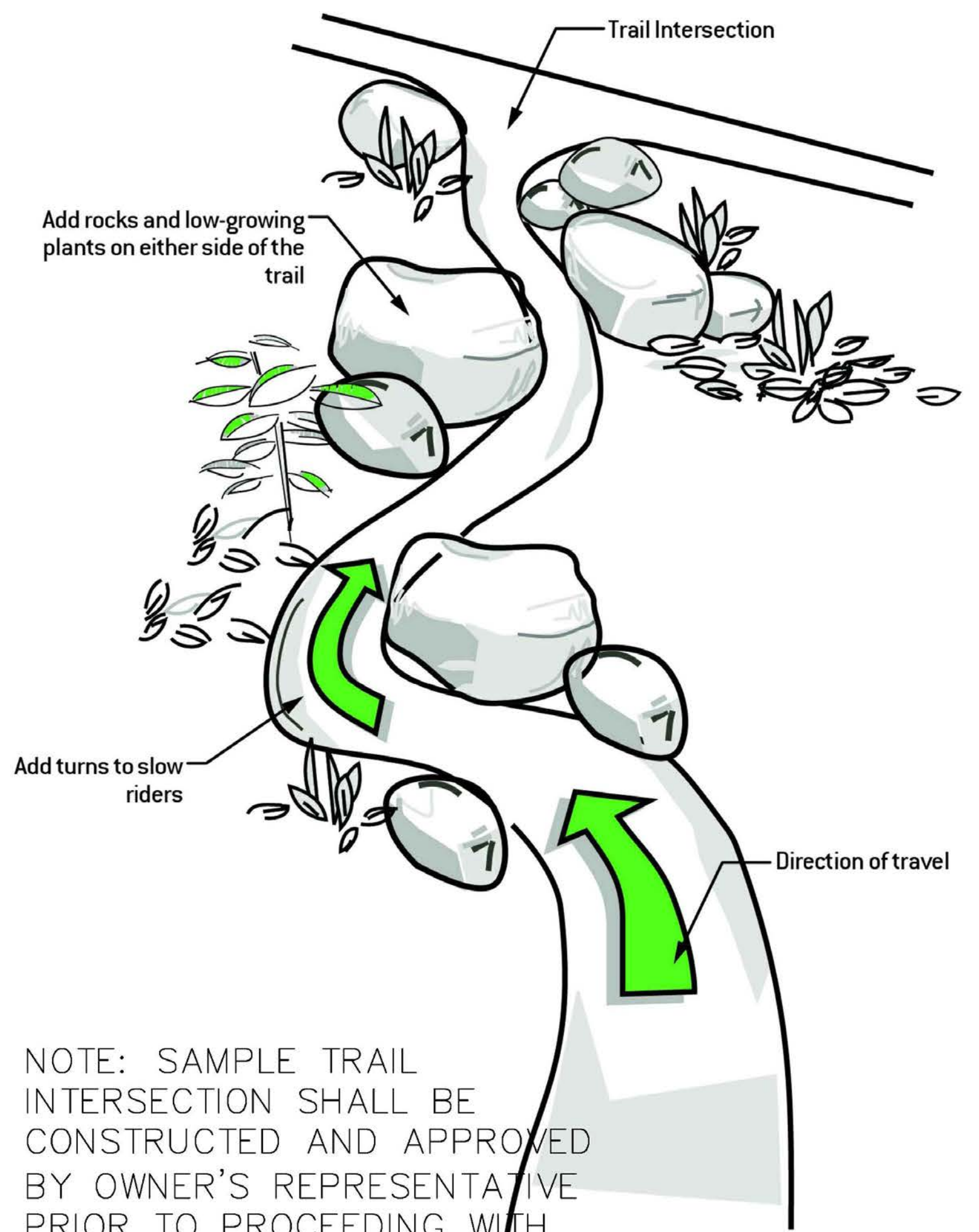
1 TYPICAL MOUNTAIN BIKE OPTIMIZED NATURAL SURFACE SINGLETRACK
 SCALE: 3/4" = 1' - 0"



2 TYPICAL MOUNTAIN BIKE OPTIMIZED CHIP SEAL TRAIL
 SCALE: 3/4" = 1' - 0"



3 TYPICAL MOUNTAIN BIKE OPTIMIZED SINGLETRACK SECTION
 SCALE: 3/4" = 1' - 0"

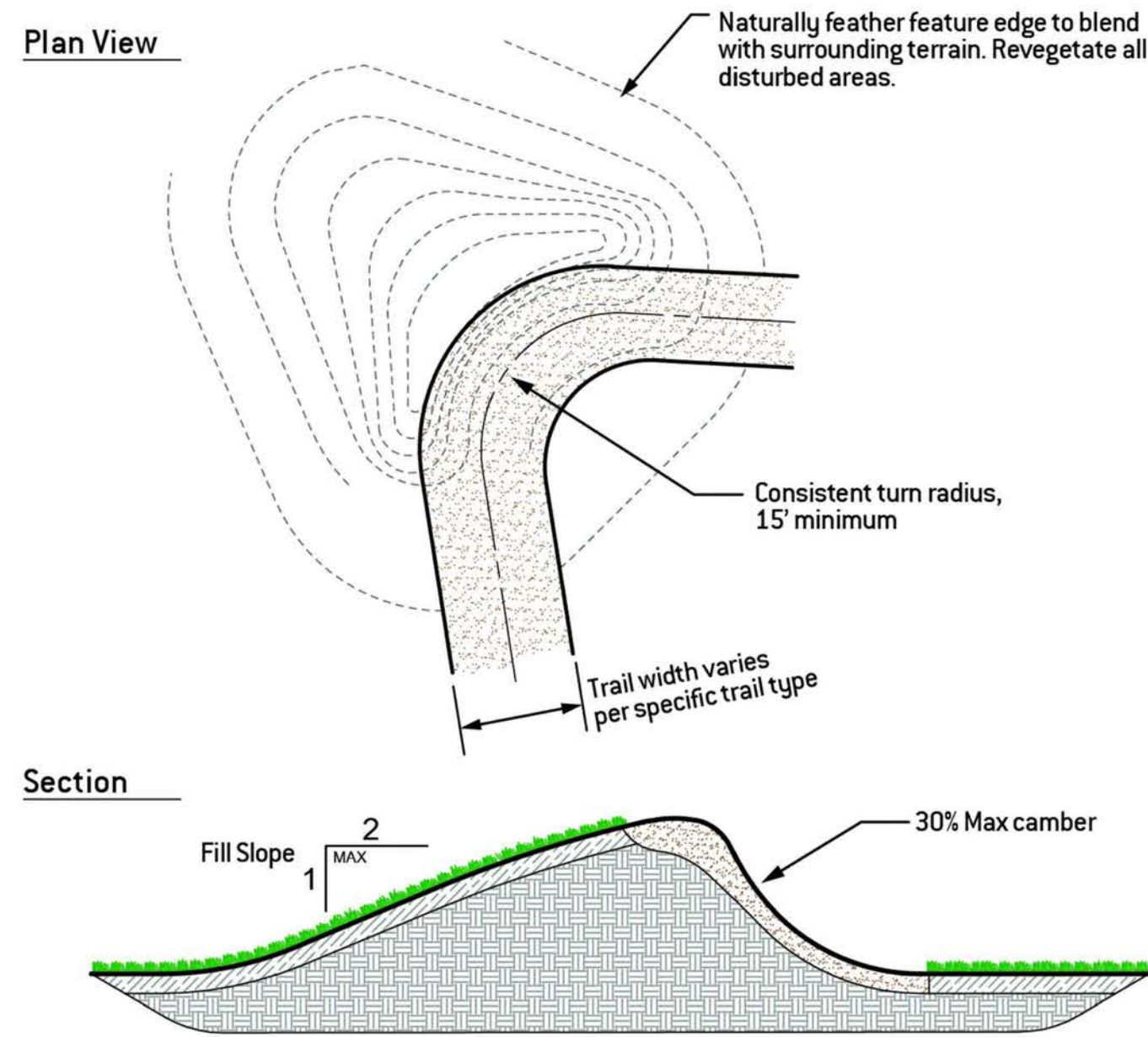


NOTE: SAMPLE TRAIL INTERSECTION SHALL BE CONSTRUCTED AND APPROVED BY OWNER'S REPRESENTATIVE PRIOR TO PROCEEDING WITH REMAINING INTERSECTIONS.

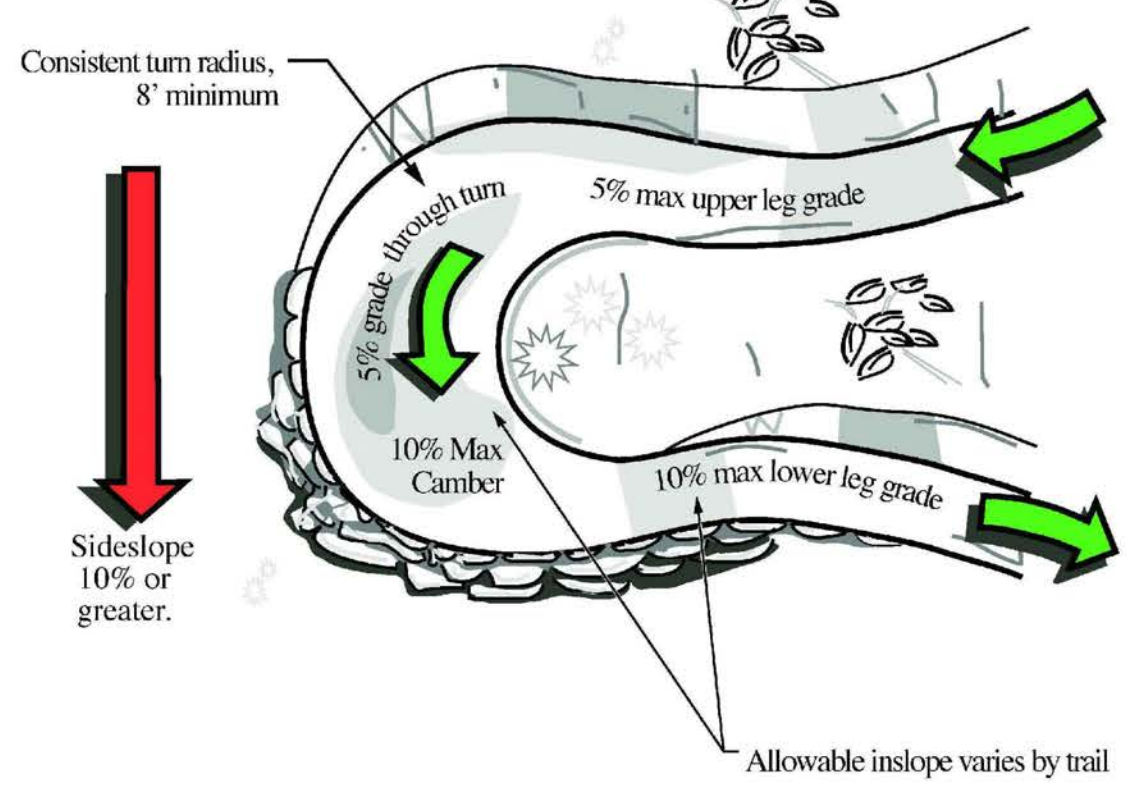
4 TYPICAL TRAIL INTERSECTION AND CORRAL
 SCALE: NTS



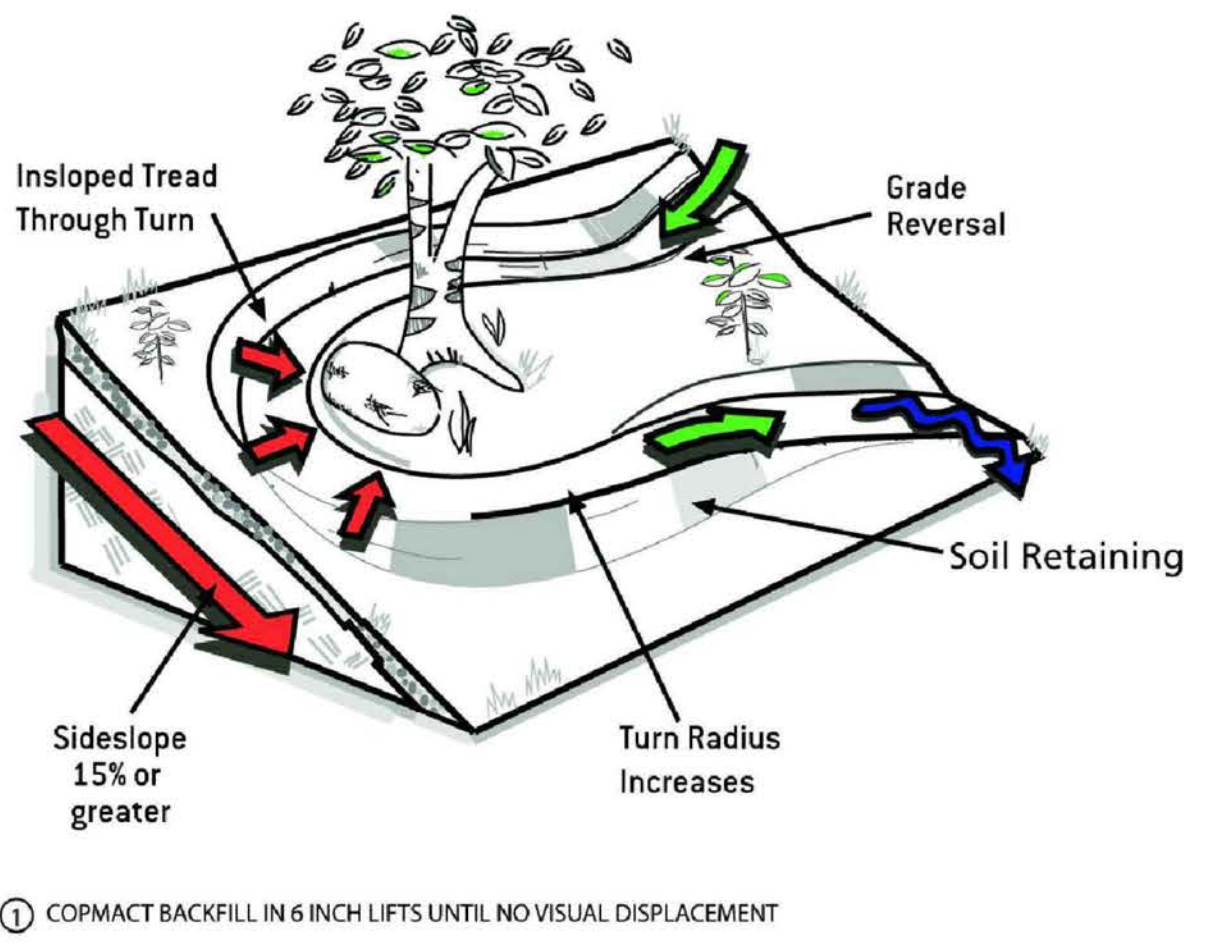
P.O. Box 20280
Boulder, CO 80308
303.545.9011
www.IMBA.com



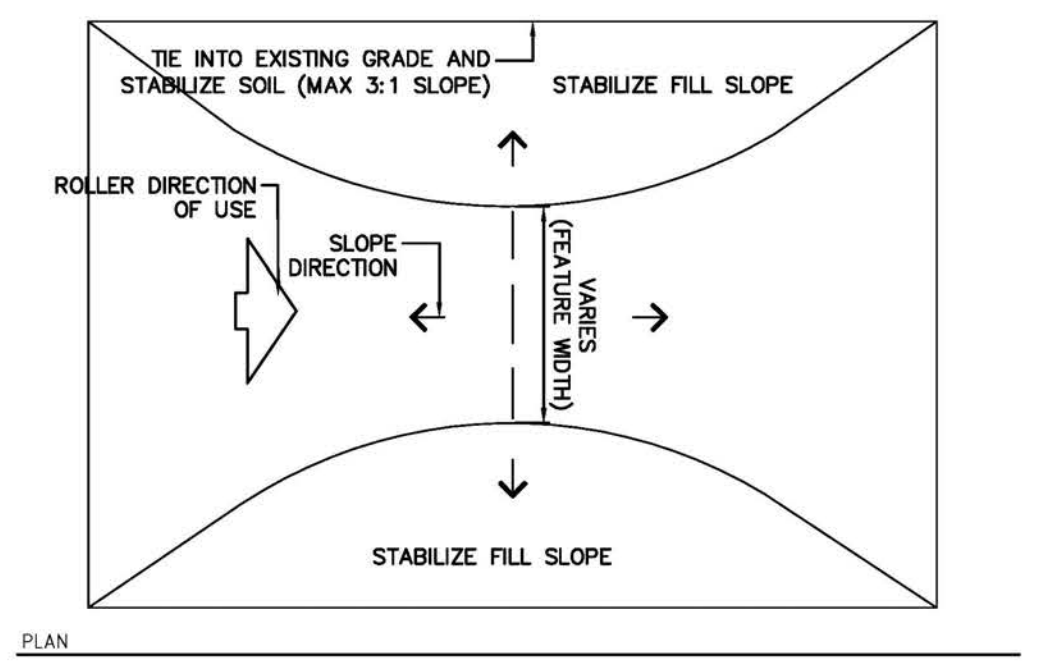
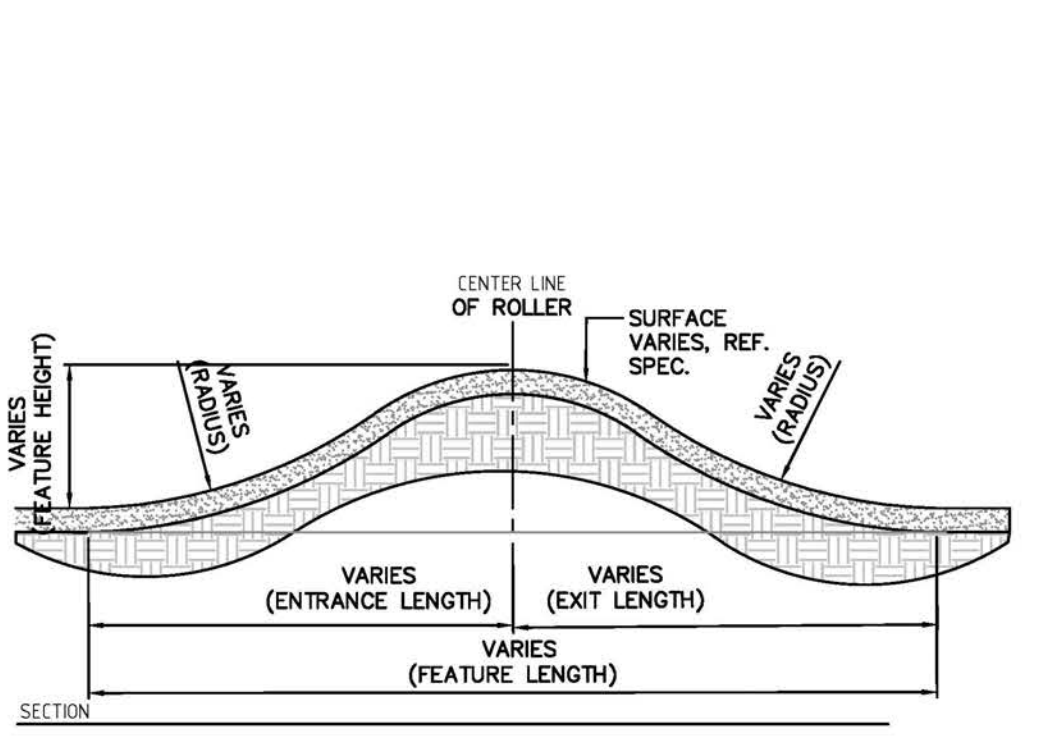
1 TYPICAL BERMED TURN
SCALE: NTS



2 TYPICAL ELEVATED PLATFORM TURN
SCALE: NTS



① COPMACT BACKFILL IN 6 INCH LIFTS UNTIL NO VISUAL DISPLACEMENT

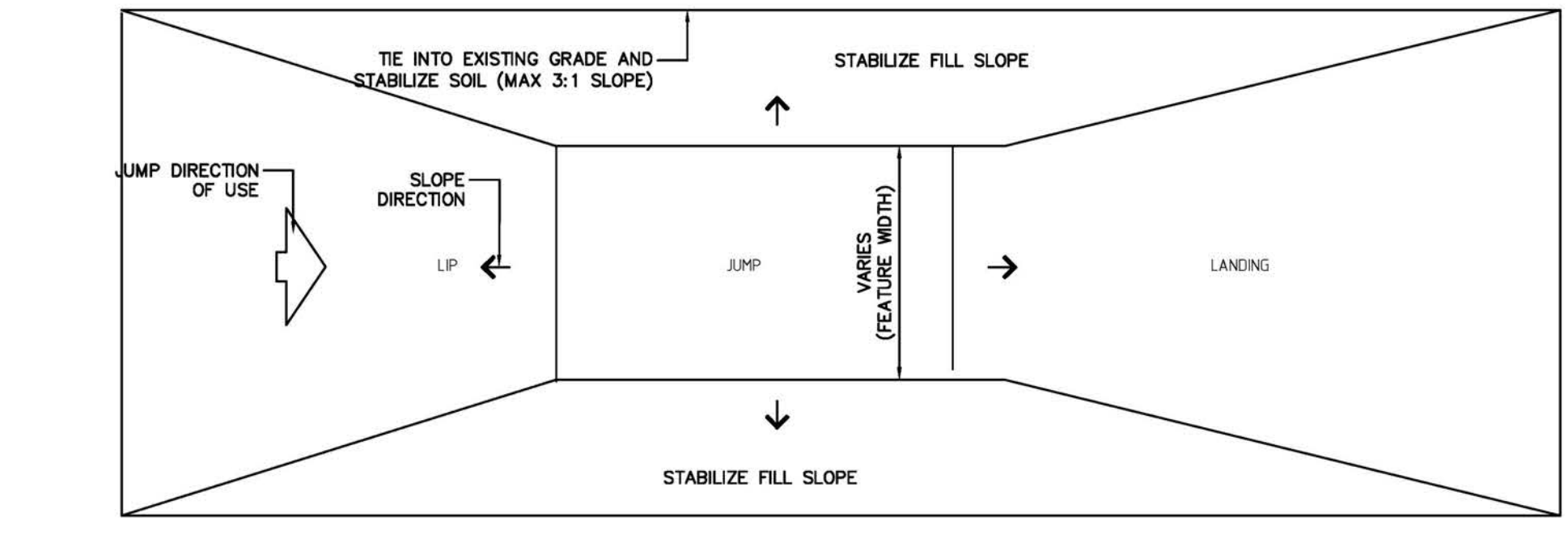
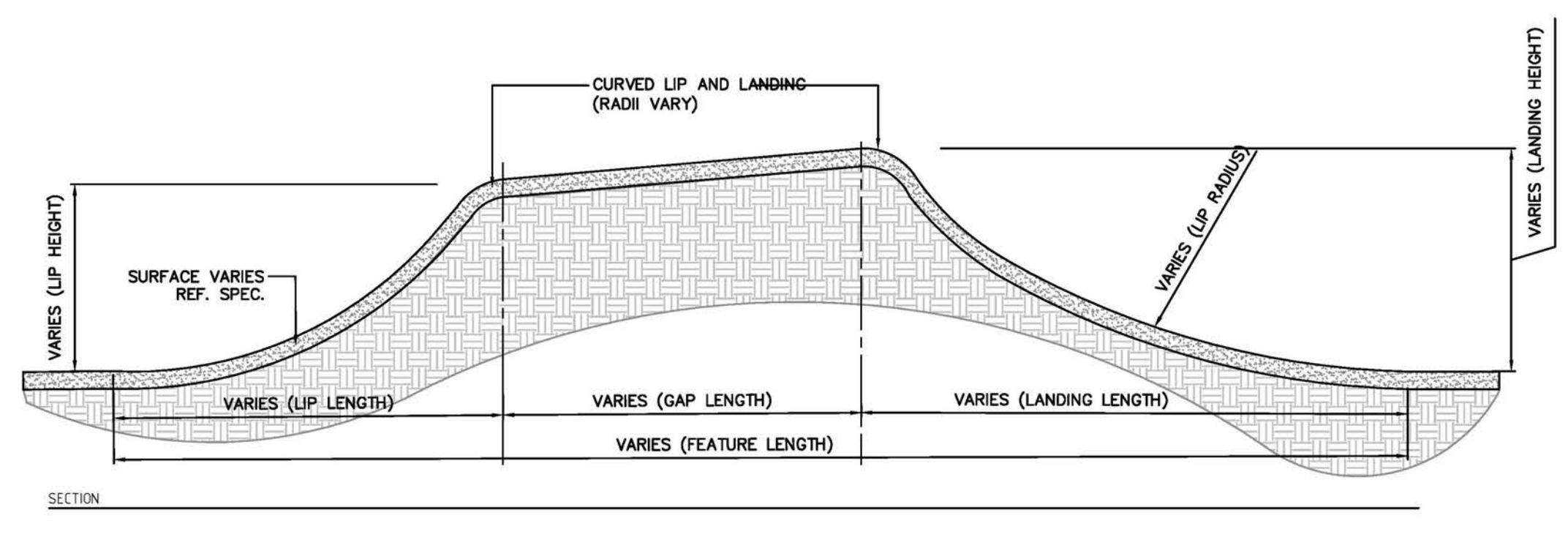


3 TYPICAL ROLLER
SCALE: NTS

Roller dimension ranges

Difficulty	Height (ft)	Length (ft)	Width (ft)
Beginner	0.5' - 2'	10' - 15'	3' - 5'
Intermediate and above	1' - 3'	10' - 20'	3' - 6'

NOTE: REFER TO TRAIL LEGEND FOR FEATURE FREQUENCY

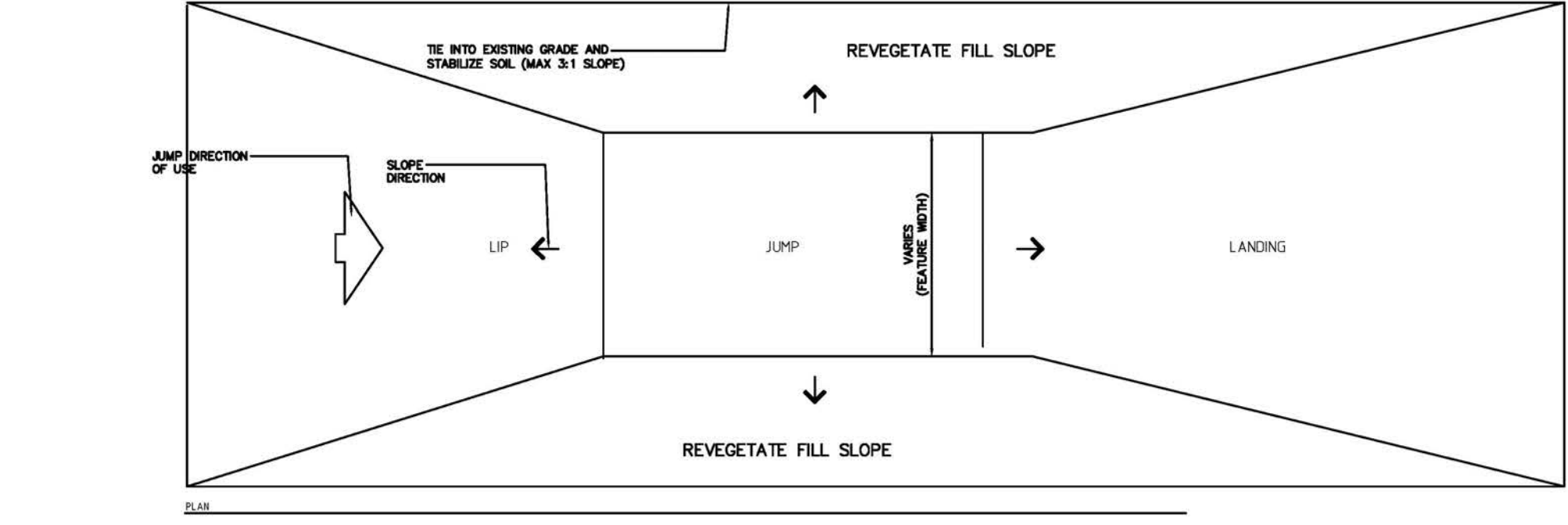
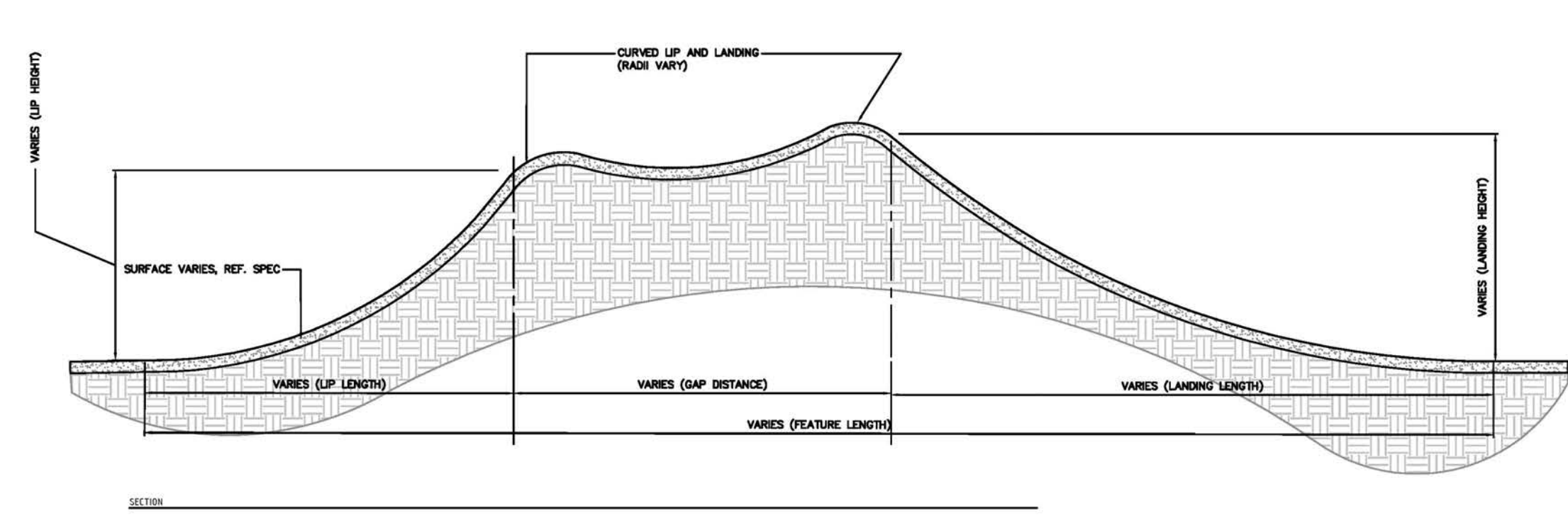


4 TYPICAL TABLETOP JUMP
SCALE: NTS

Jump dimension ranges

Difficulty	Height (ft)	Length (ft)	Width (ft)
Beginner	2' - 3'	25' - 35'	4' - 6'
Intermediate	3' - 5'	30' - 40'	4' - 6'
Advanced	4' - 7'	20' - 50'	4' - 6'

NOTE: REFER TO TRAIL LEGEND FOR FEATURE FREQUENCY



5 TYPICAL ROLLABLE GAP JUMP
SCALE: NTS

Jump dimension ranges

Difficulty	Height (ft)	Length (ft)	Width (ft)
Beginner	2' - 3'	25' - 35'	4' - 6'
Intermediate	3' - 5'	30' - 40'	4' - 6'
Advanced	4' - 7'	20' - 50'	4' - 6'

NOTE: REFER TO TRAIL LEGEND FOR FEATURE FREQUENCY

SYCAMORE PARK
MADISON, WI
DETAILS

PROJECT:

SHEET TITLE:

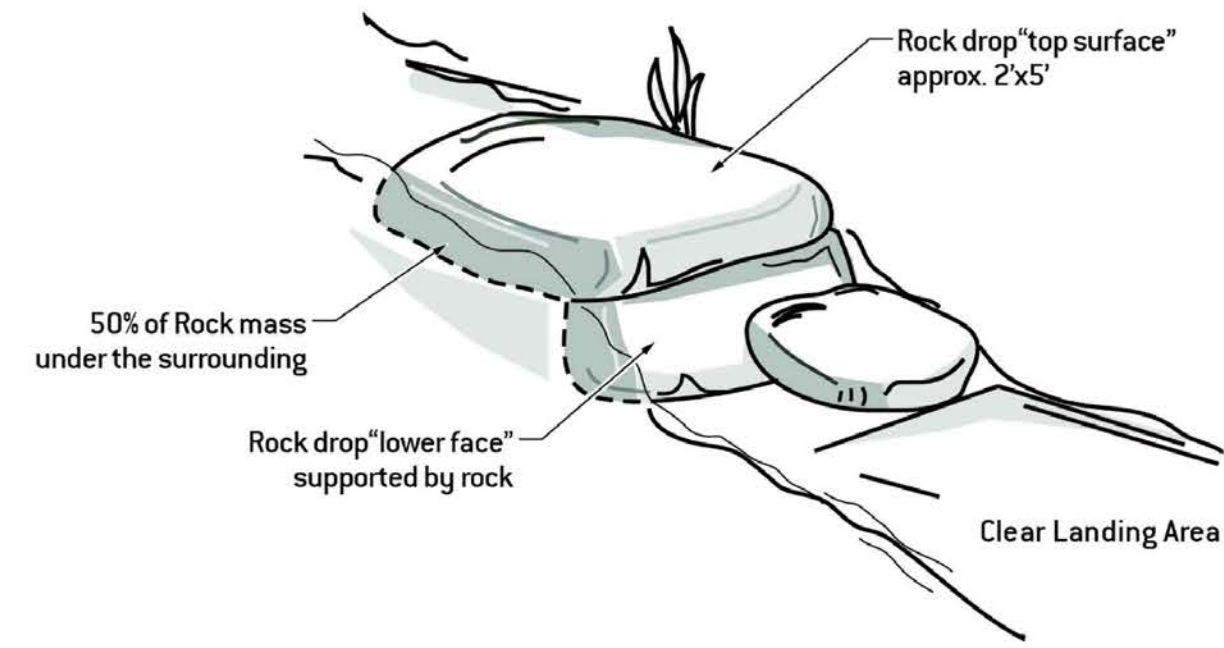
PROJECT No: CMPR2302
ORIGIN DATE: 10.31.23
DRAWN BY: TJH/RMH
CHECKED BY: MR

ISSUED FOR:

No.	DATE	COMMENT
A	10/31/23	BOR DD - CHECK SET
B	11/21/23	BOR DD - CHECK SET
C	11/29/23	BOR DD - CHECK SET

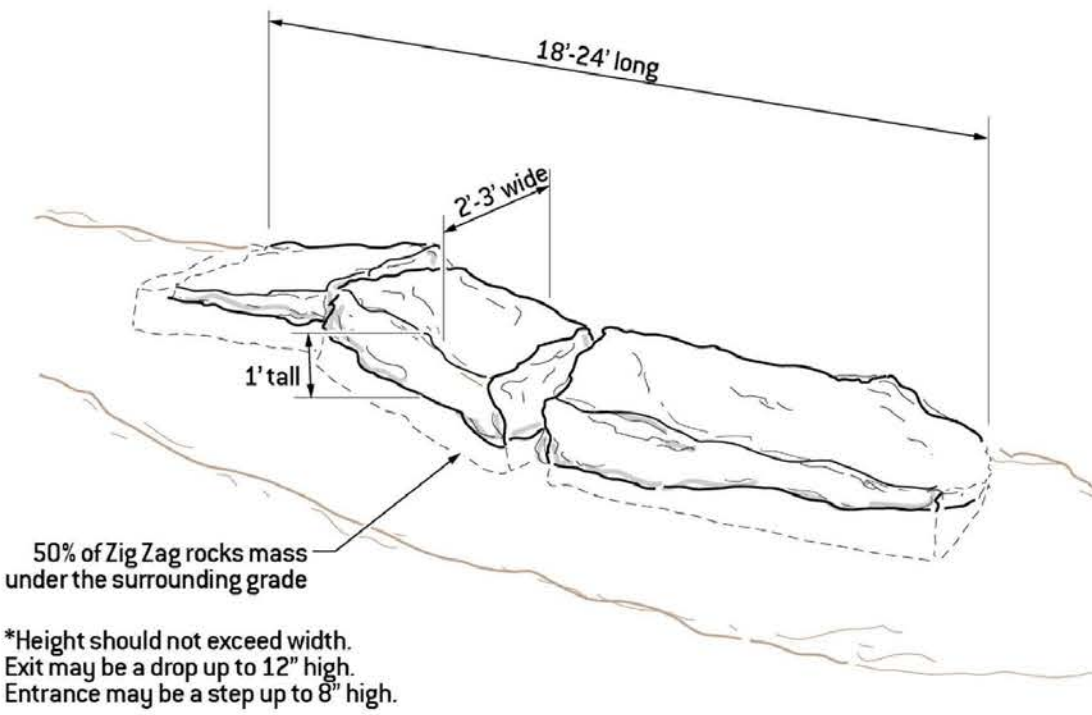
SHEET NUMBER:

DT-02



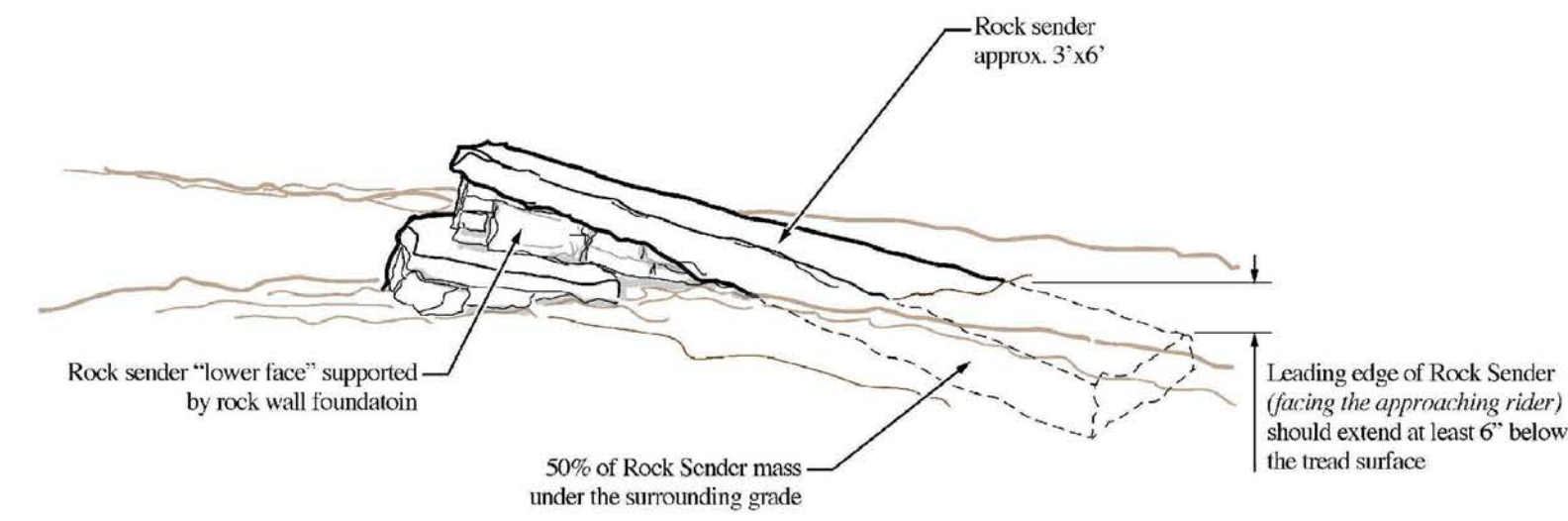
NOTE: A 48" bypass of trail tread shall be provided around each feature.

1 TYPICAL ROCK DROP
SCALE: NTS

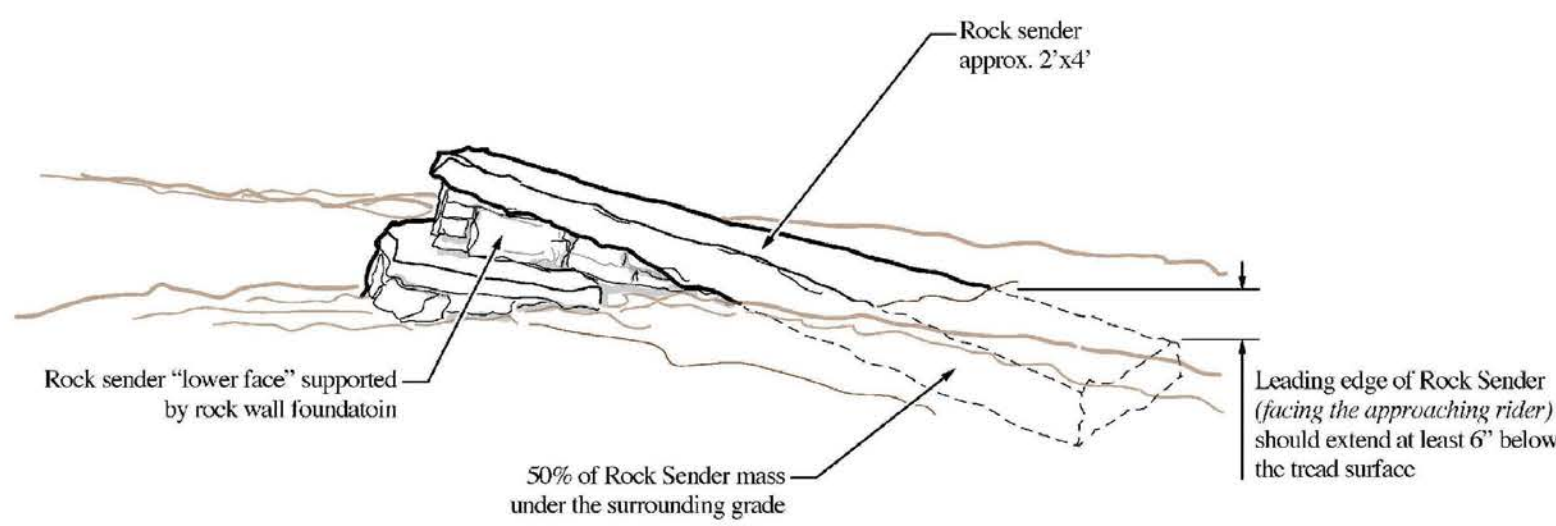


NOTE: A 48" bypass of trail tread shall be provided around each feature.

2 TYPICAL ROCK ZIG ZAG
SCALE: NTS



3 TYPICAL ROCK SENDER (MEDIUM)
SCALE: NTS

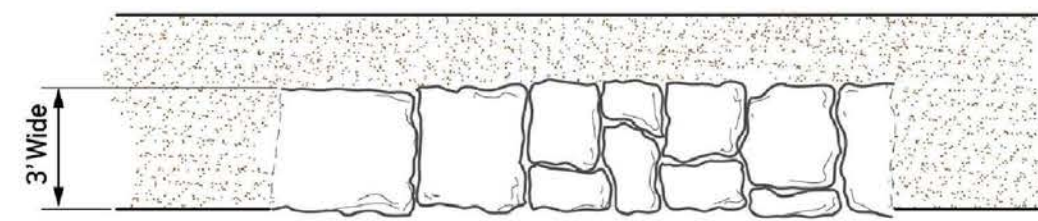


Constructed Example

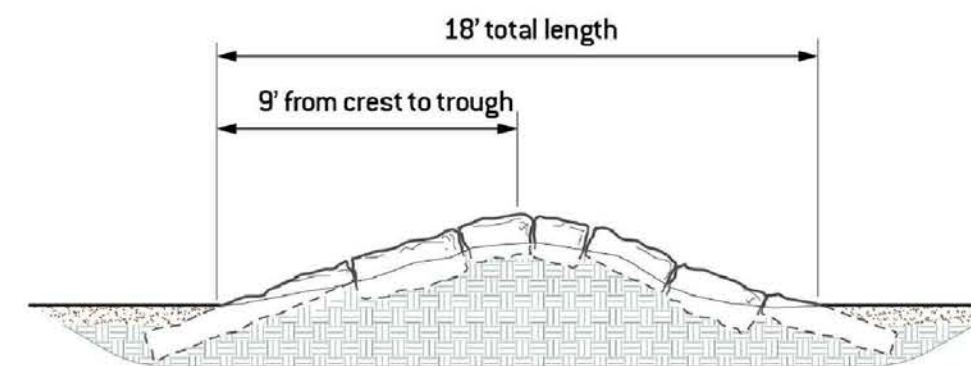


4 TYPICAL ROCK SENDER (SMALL)
SCALE: NTS

Plan View



Section



NOTE: A 48" bypass of trail tread shall be provided around each feature.

Constructed Example



5 TYPICAL ROCK ROLLER
SCALE: NTS



P.O. Box 20280
Boulder, CO 80308
303.545.9011
www.IMBA.com

SYCAMORE PARK
MADISON, WI
DETAILS

PROJECT:

SHEET TITLE:

PROJECT No. CMPR2302
ORIGIN DATE: 10.31.23
DRAWN BY: TJH/RMH
CHECKED BY: MR

ISSUED FOR:

No.	DATE	COMMENT
A	10/31/23	BOX DD - CHECK SET
B	11/21/23	BOX DD - CHECK SET
C	11/29/23	BOX DD - CHECK SET

SHEET NUMBER:

DT-03